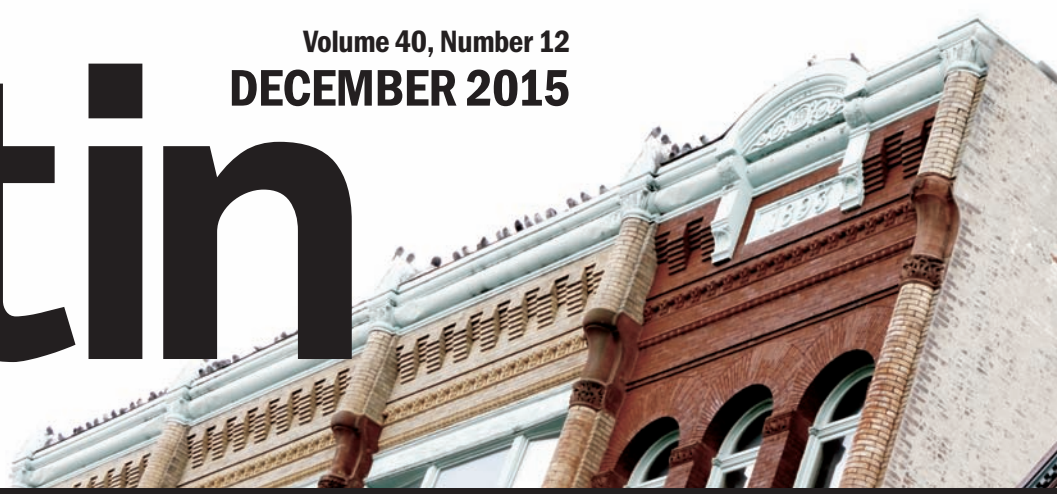


# the Bulletin

Volume 40, Number 12  
DECEMBER 2015

Serving Bloomfield, Friendship, Garfield, East Liberty,  
Lawrenceville, and Stanton Heights Since 1975



## Six months along, Pittsburgh Bike Share gaining ground

By Kathleen Fennell *The Bulletin*

*Pittsburgh* - Since the May 31 launch of its Healthy Ride program, Pittsburgh Bike Share (3328 Penn Ave.) – a nonprofit dedicated to encouraging active transportation within the city – has expanded twelve “bike-share” stations into fifty, now providing Pittsburghers with an average of 12,000 rides a month.

Erin Potts, Director of Marketing and Outreach at Pittsburgh Bike Share, said the organization plans to grow, hoping to double the current number of local share-stations in its first year. The nonprofit chose to operate a Next Bike system in Pittsburgh, the first of its kind in the United States. With Next Bike, Pittsburgh Bike Share is able to offer “smart docks” and “smart bikes” that seamlessly track rentals and returns.

The bikes are also able to lock to themselves, allowing users to return a bike to any maxed-out station or make a number of safe stops during the course of a ride.

“We went with Next Bike because of the technological advances they were able to provide us,” Potts said. Users can quickly register for an account and easily rent a

See **Healthy Ride** | page 3



**ABOVE:** Full baskets and satisfied customers line the front end of registers in the new Aldi grocery store at 5200 Penn Ave. Garfield finally has a legitimate grocery store again and local residents could not be happier. Aldi looks to build off the success of its neighboring store at 5631 Baum Blvd. as it brings fresh, affordable groceries back to Garfield. Look to page 8's “Neighborhood Focus” section for more photos and reactions from the store's Nov. 10 grand opening. Photo by John Colombo.

## Verde says farewell; Prairie finds Penn Ave. home on the range

By Andrew McKeon *The Bulletin*

*Garfield* - Four years ago, Jeff Catalina opened the only Garfield restaurant that served real tacos. Verde Mexican Kitchen & Cantina quickly forged an identity at its eye-

See **Prairie** | page 5



## Judge overrules city board on proposed AutoZone store

By Joe Reuben *Bulletin Contributor*

*Garfield* - In a decision handed down in early October, nearly five months after he received the case, Judge Joseph James of the Allegheny Court of Common Pleas ruled that

See **AutoZone plan** | page 6



**ABOVE:** Garfield resident and Bloomfield-Garfield Corporation (BGC) Board member Jeanette Coleman talks shop with Pittsburgh City Councilman Corey O'Connor during the BGC's annual luncheon on Nov. 20. Photo by John Colombo. See more luncheon snapshots on page 4.

A Publication of The Bloomfield-Garfield Corporation

Bulletin

NON-PROFIT  
U.S. POSTAGE  
PAID  
PITTSBURGH, PA  
Permit No. 2403



PUBLIC SAFETY UPDATE

Councilman Lavelle introduces ordinance to lower penalty for “small amount” of marijuana

By Pat Nightingale Pittsburgh NORML

Pittsburgh - During a City Council meeting on Tuesday, November 17, Public Safety Chair Daniel Lavelle introduced an ordinance that aims to reduce the penalty for possession of a “small amount” of marijuana (thirty grams or less), changing the punishment from a criminal misdemeanor to a civil fine. Under the new ordinance, in lieu of being charged with a misdemeanor criminal offense, individuals would face a fine of up to \$100.00 for open possession or consumption of roughly an ounce or less of marijuana.

In August of 2013, by recommendation of its Public Safety Committee, the Board of the Bloomfield Garfield Corporation (BGC) passed a resolution calling for the decriminalization of possession of small amounts of marijuana as the organization sought to remedy local problems of fair access to housing and employment. According to the BGC’s deputy director, Aggie Brose, “I cannot tell you how many times I’ve heard, ‘Aggie, I can’t get a job because I have a possession charge on my record.’”

Brose and her fellow committee-members reached out to local cannabis reform activists from the Pittsburgh chapter of the National Organization for the Reform of Marijuana Laws (NORML); the path forward was not clear until 2014, when the City of Philadelphia passed a similar ordinance and began achieving real results. Beginning in August of 2015, the BGC and Pittsburgh NORML began a series of meetings with city Council members, the Police Bureau, and Allegheny County District Attorney Stephen Zappala. Such discourse helped build consensus with local law enforcement, which proved vital to the creation of a viable ordinance.

Pointing to Philadelphia’s 73% reduction in marijuana-related arrests, Zappala expressed his support in a letter to Pittsburgh Police Chief Cameron McLay. Once it was made clear that the ordinance does not and, in fact, cannot restrict police from performing their investigative duties as permitted by state law, McLay and his commanders gave their approval. As he recently observed at a public safety meeting, Zone 5 Commander Jason Lando understands how the ordinance can afford his officers a more productive focus, yet he must protect their probable cause for conducting regular police work.

“My officers simply do not want to waste their time policing small amounts of marijuana,” he said. “Just do not take away our authority to investigate.” With the support of all of the relevant stakeholders - City Council, the Mayor’s Office, the Police Bureau, and the District Attorney’s Office - Pittsburgh will join Philadelphia in making marijuana possession a “lowest level” priority for law enforcement.

If Philadelphia’s annual results are any indicator, then hundreds of Pittsburghers will no longer face arrest and fingerprinting, or even the possibly of losing their jobs and homes, for merely possessing a small amount of marijuana. ♦

Keep up with neighborhood events! Visit the Bloomfield-Garfield Corporation’s news blog at <http://Bloomfield-Garfield.org>

Kickstart a career in Retail and Hospitality!

FREE Part-time Retail and Hospitality Training and Employment Program

Generation provides you with the access and opportunity you need to jump ahead of the line.

Exclusive employment partnerships with Retail and Hospitality employers in Pittsburgh.

Guaranteed job interviews for all Generation graduates.

Generation provides you with the support and training you need to make it to the top.

Career coaching with a focus on promotability and long-term success.

Mentorship, life-coaching and social support.

Financial assistance.

Apply NOW

[www.generationinitiative.org/usa/pitt](http://www.generationinitiative.org/usa/pitt)

Application Deadline Dec 15, 2015

You must be 18-29 years old. You must be able to pass a drug test. January 11 to February 26, 2016.

Generation

Capoeira Angola

Afro-Brazilian Martial Art Hidden in Dance

Adult Classes 7-9pm Fridays 3-5pm Sundays

Kids Classes 5-6pm Mondays & Wednesdays

Steel Dragon 100 43rd St #113 Lawrenceville 412.362.6096

[www.steel-dragon.org](http://www.steel-dragon.org) [info@steel-dragon.org](mailto:info@steel-dragon.org)

Also: Ying Jow, Tong Bei, Xing-Yi, Tai Chi, Lion Dance

TAKING MEDICATIONS JUST GOT EASIER!

Introducing The AccuPac Pill Box!

From regular prescription bottles...

We sort your medications into doses for each day and time and seal them in convenient, labeled packets

Packets come in strips in the order they are to be taken

We organize your refills and give you a dispensing box containing your packets for that month.

Medication Time Of Dose

Directions Strength

CALL TO GET STARTED TODAY!

Relieve all the worry of missed doses.

- NO Sorting Pills
- NO Trips to the Pharmacy
- NO Calling in Refills
- NO Cost for Delivery
- NO Stress
- NO Extra Charge

Transfer Your Prescriptions and Get a Credit of

\$10	\$25	\$35	\$50
1	2	3	4 or more
Bottle	Bottles	Bottles	Bottles

With this coupon. Not valid on state or federal plans. Offer expires in 180 days. Must bring all competitors' bottles in at same time to get your credit.

All insurances accepted, Including 90-day UPMC plans and 90-day Medicare D Plans!

AccuSERV PHARMACY

Same great service you've come to expect!

For Easy Transfer & Free Delivery, Call 412-586-5410

5020 Centre Avenue 15213 (Corner of Centre & Morewood, ext to Shadyside Hospital)

QR code

\*See store for details.



# Healthy Ride from page 1

a bike by using their smart devices, making a phone call, or using one of the kiosks at each solar-powered station throughout the city.

"Everything has to work right because these are rather new devices and new products. Whenever there is a launch, there is always some general frustration, but we were really very pleased with the patience we saw from a lot of our users who were willing to work with us through those phases, Potts told *The Bulletin*.

"We are seeing a lot of [the problems] disappear now, which is great, and the user rate has been very good," she said. Pittsburgh Bike Share recently released a set of data gathered through the Healthy Ride program in hopes that the community will analyze the data and turn it into unique projects. Numbers point to a dramatic increase in bike-share activity as share-stations began proliferating during the third quarter of 2015.

A bike's tracking information is never accessed unless it goes missing and Healthy Ride staff needs to pinpoint its location. However, Potts and her team would like to schedule and announce a day that, with each user's consent, they can turn on the GPS tracking to collect data and gain insight on how to improve the city's bike infrastructure.

"It is so important, from a planning perspective, for cities to see how people are getting where they are going. Is it that they are only taking a route that has a bike lane, or are you seeing them making different connections," she pondered.

"From those connections they're making - which might be onto a lower traffic, residential street - you can kind of see where you need more bike infrastructure. The route that they could be taking could be so much easier; we will be pursuing that in the future so that people can get to where they want to go more efficiently."

When planning where to situate each share-station, Healthy Ride organizers look for neighborhood linkage points where riders have easy access to places that are great for pedaling. "Bloomfield is such a great place to bike, and people certainly know that," Potts said. "There are a lot of people who commute by bicycle in Bloomfield."

In the coming months, the bike-share program will be up and running through its first winter of operations. Though Potts knows there will likely be a decline in ridership during the colder months, she says that plans for winterizing bikes and

share-stations will allow for continued growth despite the weather.

"This city is definitely changing. We have seen an incredible increase in cyclists and commuters and, basically, people just getting around via bicycle." Safety being a primary concern during the program's first year, Potts recommends that new riders take one of Bike Pittsburgh's monthly, three-hour, city cycling classes to learn the ropes.

"We offer a free bike-share just for taking a city cycling class," she noted. "If you don't have a bike and you're nervous about beginning to bike around the city, then just take one of ours for free. Get out there and learn how to do it a little bit better."

Potts and her program staff hope that both cyclists and drivers operating motor vehicles can come to be more understanding of each other's roles while they learn how to play by the rules of the road.

"In terms of what the rules are, there does need to be more education for people on bicycles and people in cars, as well as pedestrians," she admitted. "There tend to be these misconceptions about what the rules are; you might vehemently believe that cyclist is not supposed to be doing that thing when it's perfectly within their legal right."

According to Potts, "Statistically, traffic violations are about the same between people on a bike and people in a car. It's not higher [for cyclists], but I think that a lot of times it seems higher because, when they see a cyclist in the middle of the lane, most people mistakenly think bikes are supposed to be over on the right."

As it continues promoting safety education and working out the logistical kinks of a sprawling bike-share network, Healthy Ride now affords thousands of local commuters a healthy alternative, an option they can integrate into their everyday travel plans.

"We certainly see ourselves as a part of the public transportation system here," Potts said. "Multi-modal transit is the new way of travelling. It's navigating your day based on what is working best for you right in that moment."

There are currently a dozen bike-share stations located in \*\*\*The Bulletin's\*\*\* coverage neighborhoods alone. For more information about the Healthy Ride program, including where to access its public share-stations and how to view its voluminous data records, visit <https://healthyridepg.org> or call 412-535-5189. ♦

## the Bulletin

A publication of the  
Bloomfield-Garfield  
Corporation



**Serving Bloomfield, Friendship, Garfield, East Liberty, Lawrenceville, and Stanton Heights Since 1975** with the mission of reporting on activities affecting those communities and offering an opportunity for residents to express their opinions and exchange ideas.

### Volume 40, Number 12

The deadline for the January 2016 issue is **Friday, December 11, 2015.**

**Editorial and Advertising Offices** • 5149 Penn Avenue • Pittsburgh, PA 15224  
412.441.6950 ext. 13 • (Fax) 412.441.6956 • [bulletin@bloomfield-garfield.org](mailto:bulletin@bloomfield-garfield.org)

**Total Circulation** • 21,000 Copies • 18,000 Mailed • 3,000 Bulk Dropped

**Staff** • Andrew McKeon, Editor • Kathleen Fennell, Editorial Intern • Martin Pochapin, Advertising • Rick Swartz, Proofreading • Mary Anne Stevanus, Office Manager • Trib Total Media, Printing & Mailing • CISP, Distribution

**Board Meetings** are held by the Bloomfield-Garfield Corporation at 6:30 p.m. on the second Monday of each month, at 5321 Penn Ave., and are open to the public. The opinions expressed herein are not necessarily those of the publisher.

The Bulletin is made possible in part by funding from Dollar Bank, WesBanco Bank, Allegheny Valley Bank, and The Heinz Endowments.

[www.bloomfield-garfield.org](http://www.bloomfield-garfield.org) © 2015 by Bloomfield-Garfield Corporation

**Thank you!** The Bloomfield-Garfield Corporation would like to acknowledge its main corporate partners: WesBanco Bank, Dollar Bank, and Allegheny Valley Bank. Thanks to First Niagara Bank, PNC Bank, Allegheny Health Network, Citizens Bank, The City of Pittsburgh, the Sprout Fund, *The Bulletin's* advertisers, and all our members.

## City's first charter school fair brings parties together in East Liberty

By Rachel Amankulor *PennCan*

*East Liberty* - On Saturday, November 14, more than 100 community members attended Pittsburgh's first ever charter school fair at the East End Cooperative Ministry (6140 Station St.) in East Liberty. Eighteen of the city's brick-and-mortar charter schools were on hand to provide families with information about free, open-enrollment, public school options.

Organized by the Pennsylvania Campaign for Achievement Now (PennCAN) - a statewide education advocacy organization - the event involved administrators, teachers, and students; together, they answered parents' questions about all the unique, academic enrichment offerings, as well as the application process.

"Propel Schools wants families to learn about public school options that are available in the area," Jeremy Resnick, co-founder of Propel Schools, said. "We hope the fair will help make the selection and application process easy for parents."

Alongside Propel Schools, PennCAN strives to ensure educational equity for all students by expanding families' access to high-quality options, regardless of their ZIP code.

Many parents confuse charter schools with private schools or magnet schools, so they are thrilled to learn that charter schools are completely free and have no admission requirements. If the amount of applications exceeds the amount of available openings, selection is determined by a lottery.

Some parents, like Jennifer McCalla - whose daughter currently attends middle school at Propel McKeesport, already know about the benefits of a charter school education. "Our family came to the charter fair today because our daughter will be going to high school next year," McCalla said. "We are looking for a charter high school that will offer her the same high quality education she is receiving now." ♦



# Forty Years Strong: the Bloomfield-Garfield Corporation's 2015 Luncheon



**ABOVE:** More than 150 guests gather at the Pennsylvania Athletic Association's grand "Pennsylvania Room" in Oakland on Nov. 20 for the Bloomfield-Garfield Corporation's (BGC) "40 Years Strong" luncheon. In celebrating four decades of community achievement, the BGC Board and staff also awarded present-day heroes and advocates alike. Photo by John Colombo.

**BELOW:** The Bloomfield-Garfield Corporation's executive director, Rick Swartz (right) bestows the BGC's annual Public Service Award to former Zone 5 Police Commander Tim O'Connor for his exemplary work in East End communities. Photo by John Colombo.



**BELOW:** Pioneer Honoree John Creasy and his wife, Alyssa, enjoy a moment together after his acceptance speech. Creasy was honored for his work with Garfield Community Farm. Photo by John Colombo.

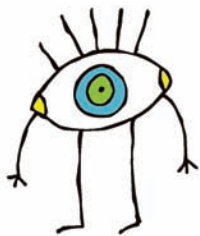


**ABOVE:** Jhonaziya Brooks, who participated in the Bloomfield-Garfield Corporation's College & Career Readiness program, wipes a tear from her eye as the gathered audience watches a video about her formative experiences at the BGC. Photo by John Colombo.

**BELOW:** Aggie Brose, deputy director of the Bloomfield-Garfield Corporation (BGC), gives a rousing testament to the power of teamwork as she commemorates the BGC's forty strong years of community organizing. Photo by John Colombo.



**ABOVE:** Guests mingle at the "40 Years Strong" luncheon on Nov. 20. Attendees included Garfield residents, BGC staff, public officials, and leaders from local businesses and nonprofits. Photo by John Colombo.



## LAWRENCEVILLE VISION CARE

Welcomes **Dr. Gerry Bell** and all his patients to our practice!



Dr. Gerry Bell has been in practice for 15 years in Bloomfield, and now we're joining forces to serve all our patients better. Dr. Bell has experience:

- Diagnosing and treating eye disease
- Fitting glasses and contact lenses
- Consulting for surgery, including lasik, glaucoma and cataracts.

We will treat all ages!

4122 Butler Street • Pittsburgh, PA 15201  
412-682-2339 • [www.lawrencevillevisioncare.com](http://www.lawrencevillevisioncare.com)

## Is your child **OVERWEIGHT** and between the ages of 12 & 17?



IF YES, THEY MAY BE ELIGIBLE for a research study at Children's Hospital of Pittsburgh of UPMC that will examine health benefits of regular exercise

### STUDY INCLUDES

- Exercise Training at No Cost
- Dietary Counseling
- Fitness Evaluation
- Physical Exams & Blood Testing
- Body Composition
- Overnight Stays
- Compensation Provided



Children's of UPMC  
Hospital of Pittsburgh

ad-593182

**FOR MORE INFORMATION, PLEASE CALL 412-692-7567**



# Prairie *from page 1*

catching 5491 Penn Ave. location – where servers dished up fresh guacamole and poured long tequilas behind a spectacular bar.

“I think Verde had a great four-year run. We were very welcomed by the community and we had some great business,” Catalina said. “Over the past four years, though, the Pittsburgh restaurant scene has changed, and for the better. Now that local restaurants have upped their game, the bar has been set higher.”

Catalina should know; his other venture, Tender Bar + Kitchen (4300 Butler St.) in Lawrenceville, has long been a bright spot in the neighborhood’s constellation of culinary talent.

But running a Mexican restaurant is tough business in Pittsburgh; some observers

joke that President Obama has been in office longer than Mexican cuisine has been popular within the city. Until a recent proliferation of restaurants in the East End, local Mexican food was relegated to a few national chains in strip malls, well beyond city limits.

Catalina and his wife, Erin, never thought they would have to re-brand their space, but then they watched their restaurant suffer what he describes as a 30% drop in sales. “The other big impetus for change was, of course, the Penn Ave. reconstruction. It’s no secret that the one-way traffic away from the East End really hurt a lot of the businesses,” Catalina said. “By doing something bigger and bolder, with a concept like Prairie, we want to bring some of our old customers back to this familiar, but altogether new space.”

Along with a crew of architects and other experts, Catalina and company were able to transform Verde into Prairie in just a matter of weeks. “Every day that your restaurant is closed, there’s no revenue coming in. So, Erin and I wanted to turn this around as soon as possible.”

The re-imagined, interior dining area – which he contends has more light and warmth than Verde ever did – is festooned with artwork made by locals like Gabe Felice and Most Wanted Fine Art co-founder Jason Sauer. Sparks were literally flying when workers from Bloomfield’s Iron Eden (4071 Liberty Ave.) brought huge pieces of iron to the restaurant and welded them to the edge of the bar. Its shiny patina is one of Prairie’s many aesthetic signatures, like the corrugated metal –salvaged from an old barn – that hangs on the south wall.

While he made sure to change the ambiance, Catalina wanted to retain some of Verde’s servers and kitchen staff for his new endeavor. “Some of those principles we had at Verde certainly carry through to Prairie, especially the notion of incorporating local, fresh ingredients,” he said.

“I grew up in Texas and my parents were born and raised in Mississippi, so I’ve always had a great fondness for American heartland cuisine from the farm, field, and stream.” According to the owner, Prairie’s approach intends to embrace these changes to Pittsburgh’s proverbial palate.

“We see a big movement towards non-fussy fare, quality food that is approachable,” Catalina observed. “Think of a casual, family-friendly place that serves farm-to-table, American cuisine. Then, you combine that with a craft cocktail program and you’ve got something that just makes sense.” Menu items like the “country quiche” and the “farmer’s breakfast” call to mind a comfortable atmosphere involving less intimidating, more familiar fare.

“People used to ask, ‘what’s mole?’ There was an educational aspect to Verde’s cuisine,” Catalina confessed. “Here at Prairie, there is less education about what the food is, but there is now an imperative to inform our customers where the ingredients come from.” Locally sourcing ingredients when possible, the “scratch kitchen” will also try to adhere to customers’ allergy preferences when



**ABOVE:** Jeff Catalina takes a moment to reflect on progress next to portraits of his father and grandparents on their Mississippi farm. In under two months, Catalina was able to turn his former cantina into Prairie (5491 Penn Ave.), a new Garfield restaurant specializing in American heartland fare.

creating various entrees and appetizers.

Green and blue icons dot Prairie’s menu, identifying the vegetarian and gluten-free food options. “Something that’s crucial for us is the ability to have a ton of vegetarian and gluten-free options. It’s something that Verde was known for, so it’s very important for us going forward.”

As for the drink of choice, Catalina has made an elementary substitution that has turned some heads during the first few weeks of the restaurant’s soft opening. “We’ve swapped out tequila for bourbon,” he exclaimed. “Bourbon is the star here, but our goal was never to have, you know, 800 bourbons on hand. This is a curated list of a few dozen that we’re very excited to share.”

Catalina is not afraid to admit that Verde was not always the most family- friendly of restaurants. To better accommodate families, the restaurant now has more high chairs, booster seats, a baby-changing station, and a dedicated kids’ menu.

“Something we’re really excited about is a partnership we formed with the Children’s Hospital of Pittsburgh Foundation. A dollar from every item sold off our kids’ menu goes as a donation to the foundation,” Catalina said. “Friendship and Garfield are very family-focused neighborhoods and we want to be a great neighbor. We want to be the neighborhood restaurant for so many of these families and friends of ours.”

Prairie’s Nov. 30 grand opening launches full lunch, dinner, and weekend brunch service. To commemorate the end of prohibition, Catalina is hosting a hot cocktail party for “Repeal Day” on Saturday, Dec. 5. Guests will enjoy mulled cider, eggnog, bourbon flips, loggerhead demonstrations, and more outside on the patio. Diners can find out more about Prairie, including the restaurant’s holiday schedule, at <http://prairiepgh.com>. ♦

**Christmas**  
has a different  
meaning to everyone,  
and that meaning can change  
from year to year, depending on what fate  
has brought your way. For some, it has been a  
year of prosperity... for others, it has been a year  
of loss. Fortunately, time has a way of healing,  
and letting us go forward—to celebrate again.  
Whatever the year has brought your way, we want  
you to know our family’s thoughts are with you.

## D’Alessandro Funeral Home & Crematory Ltd.

**“Always a Higher Standard”**

*Daniel T. D’Alessandro, Spvr.*

4522 Butler St. • Pittsburgh, PA 15201

Phone: 412-682-6500 • Fax: 412-682-6090

[www.dalessandroltd.com](http://www.dalessandroltd.com) • [dalessandrofh@aol.com](mailto:dalessandrofh@aol.com)



# AutoZone plan *from page 1*

the city Zoning Board erred in its conclusion about a proposed AutoZone store at Penn and S. Negley Aves; the panel had concluded that construction of a retail outlet (to replace the former Babyland store) must comply with present-day zoning requirements.

Judge James reasoned that since the developers, 5542 Penn LP, have pledged to retain just a single, rear foundation wall along a back alley (known as Hugus Pl.), their plan essentially constitutes a re-use of the existing structure. Although the building has sat vacant for nearly five years, Judge James chose not to address the possibility that, by the fall of 2015, the prior use of the structure could be considered abandoned. Such a consideration might have opened doors to stipulations that any new building must meet the current zoning code’s “setback requirements” from both the main streets and the alley.

In another curious twist, according to city planners, the judge also chose to ignore the board’s decision to deny the developer’s request for six variances from the zoning code, effectively granting the developers relief from other requirements related to the design of the new structure and its placement on the lot. In stark contrast to the zoning board’s four pages of legal reasoning rejecting 5542 Penn LP’s request, Judge James offered only a page and a half in justifying his decision to reverse the board.

Reaction from several community groups, who had joined the city as intervenors in arguing against the AutoZone proposal, made for a chorus of surprise. “It’s disappointing that this was all that Judge James had to say about how a very important corner in the East End is eventually developed,” Friendship Community Organization spokesman John Axtell observed. “We’re going to have to see if Commonwealth Court agrees with him.” Axtell confirmed that an appeal of the judge’s decision was filed in early November.

The Bloomfield-Garfield Corporation, another intervenor in the case, was also nonplussed with the decision. “If Judge James were a baseball pitcher, it would appear someone forgot to remind him that home plate is actually sixty feet from the pitching mound, not fifty-four or fifty-five feet,” executive director Rick Swartz remarked. “To have the case for five months - and produce as little as he did - is a surprise, especially given the esteemed reputation he has as a jurist.” ♦

# Lawrenceville celebrates community with local arts, food, and awards

By Lauren Connelly *Lawrenceville United*

*Lawrenceville* - On September 19, Lawrenceville United (LU) hosted hundreds of Lawrenceville residents and stakeholders at the Teamsters Local 249 Hall (4701 Butler St.) for its third annual “Live! in Lawrenceville” fundraising event.

Local stakeholders celebrated their neighborhood love, the hard work they have invested into programs and projects, and the exciting plans for next year. The fundraiser showcased local food, beverages, arts, and entertainment.

Lawrenceville’s own DJ Zombo, along with a band called, “The Spuds,” provided the tunes while local restaurants, breweries, and wineries provided the nourishment. Attendees snapped photos with the Doughboy himself in a special Lawrenceville photo booth and got a chance to participate in some interactive mapping activities to share their community stories.

As part of the event, Lawrenceville United announced the recipients of the ‘Neighbor of the Year’ and ‘Community Partner of the Year’ awards, for which dozens of local residents and organizations were nominated by members of the community. Lawrenceville’s 2015 ‘Neighbor of the Year’ was Tina Russell, a dedicated wife, mother, and parent volunteer. Russell works tirelessly as a founding member of the PEP Rally Parent Group at Arsenal Middle School (220 40th St.) to advocate for the school’s students and teachers.

Tree Pittsburgh received LU’s ‘Community Partner of the Year’ award for its work assisting the Lawrenceville Tree Tenders in planting and maintaining more than 500 trees within the community. The arboreal

organization also helped develop the city’s first community-level, master plan for an urban forest in Lawrenceville.

In addition to the awards ceremony, the event offered an opportunity for residents to purchase historic images of Lawrenceville - as brought to life by local artist Fritz Keck - with 50% of the proceeds generously donated to support LU’s community programming.

*Vintage Lawrenceville* is a series of limited-edition, original oil paintings; Keck has reimagined archival images from various vantage points in historic Lawrenceville. The artist chose to recreate three images from the early 1900s: one features a man waiting for a bus near the iconic doughboy statue, another displays a horse and buggy on a cobblestone street with the Allegheny Cemetery and distant steel mills in the background, and a third image shows a pensive man on a stoop near 52nd and Duncan Sts.

For those interested in giving a piece of Lawrenceville’s history to a friend or neighbor for the holidays, mounted giclee and paper prints are still available for purchase. On Dec. 5, from 10 a.m. until 4 p.m., Keck will have samples of his artwork on display at the annual Cookie Mall (4600 Butler St.) as part of the “Joy of Cookies Tour.”

He will also be selling his work Downtown at the Bayer Center’s Holiday Bazaar on Dec. 10, from 5 p.m. to 7 p.m. at Heinz 57 Center (339 6th Avenue). Additional details and images are also available at [www.lunited.org](http://www.lunited.org) or can be made available by calling 412-802-7220. ♦



**ABOVE:** A streetscape of historic Lawrenceville’s Doughboy Square, this throwback oil painting (by local artist Fritz Keck) pays tribute to the neighborhood’s natural aesthetics. Keck has donated proceeds from the sale of his work to Lawrenceville United. Visual courtesy of Lauren Connelly.

PITTSBURGH EYE ASSOCIATES



Dr. Roxana Barad    Dr. Chris Cecchini  
Ophthalmologist    Optometrist

EVERYTHING LOCAL FOR YOUR  
EYE CARE NEEDS!

- Medical eye care & dry eye therapy
- Diabetic eye exams
- Cataract evaluation & surgery
- Refractive implants for cataract surgery
- Glaucoma evaluation & treatment
- Cosmetic eyelid procedures
- Full service optical department & contact lenses

4424 Penn Avenue  
Suite 101, Pittsburgh, PA 15224  
[pittsburgheyeassociates.com](http://pittsburgheyeassociates.com)  
Across from Children’s hospital

412-683-0500

LET US TAKE CARE OF YOU!

Laurentian Hall  
Apartments

Apartment Living for Senior  
Citizens in an Elegant Setting



Offering These Amenities:

- Equipped Kitchens
- Nightly Meals Catered by Ncva Café
- All Utilities Included
- FREE On-Site Laundry
- FREE Parking
- On the Busline
- Section 8 for Qualified Applicants
- 1st-Floor Lounge with Cable TV & WIFI

Immediate Openings for  
Efficiency Apartments!



For more  
information, call  
412-361-4462





# Businesses blooming on Penn Ave. as reconstruction project nears completion

By Amber Epps Bloomfield-Garfield Corporation

**BELOW:** A veiw from the rooftop of Action Housing's new Penn-Mathilda Apartment building (4800 Penn Ave.) provides a vantage on the burgeoning arts and commercial corridor along Penn Ave. Now that the first phase of an intense reconstruction project is coming to a close, business owners are finding their rhythm again as foot and vehicle traffic return to normal. Although Phase I requires a few more features during for the final push, all parties involved are glad to see the project to wrap up as soon as possible. Photo by Lena Andrews.



Although Phase I of the Penn Ave. reconstruction project extended well beyond the original timeline, this did not deter businesses from becoming part of the growing commercial district. A recap of the new businesses, as well as a list of the commercial properties that have sold on Penn Ave. during the Phase I timeline, includes the following:

- **Spork** – “Small plates” restaurant taking over the former Quiet Storm space at 5430 Penn Ave.
- **Refresh PGH** - Sneaker restoration and clothing store located at 5450 Penn Ave.
- **Timebomb Shop** - Urban lifestyle clothing and accessories shop that recently moved to 5450 Penn Ave., where it shares a roof with Refresh PGH.
- **Bantha Tea Bar** - New tea and coffee bar at 5002 Penn Ave.
- **Pizza Fiesta** - New pizza shop occupying 4911 Penn Ave. (the former Calabria’s loca- tion). The building recently sold for \$395,000.
- **ModernFormations** – Art gallery at 4919 Penn Ave., the \$350,000 sale of which is still listed as “contingent.”
- **Los Sabrosos Dance Company** - Dance studio located at 4909 Penn Ave.
- **Mixtape** - A new music gallery, cafe, and lounge located at 4907 Penn Ave.
- **LOCAL 412** - Hip-hop shop and performance gallery located at 4901 Penn Ave.
- **Robin's Nest** - Retail shop selling various handmade goods from local artisans located at 5504 Penn Ave.
- **Prairie** - A new restaurant from the owners of Verde Mexican Kitchen and Cantina, at its former 5491 Penn Ave. location.
- **Lifespace Pittsburgh** - Real estate brokerage company located at 5437 Penn Ave.
- **4825 Penn Ave.** – Property sold for \$80,000.
- **5019 Penn Ave.** - In 2012, the BGC sold the property to a new owner for \$5,000; that owner recently sold the property to Easy Rentals, LLC, for \$105,000.
- **5511 Penn Ave.** – Property sold for \$155,000. ♦

## Phase I reconstruction hits home stretch

By Aaron Pickering Pittsburgh Department of Public Works

*Penn Ave.* - The Penn Ave. reconstruction project is nearing completion, but there are a handful of activities that still need to take place. Over the next several weeks, the contractor will be completing the site amenities, which includes installing the decorative tree grates, building ramp hand rails, trash/recycle containers and lighted benches.

Other miscellaneous activities, including the installation of a traffic pole along Penn Avenue west of Mathilda. There may be short-term lane restrictions on Penn Ave. for the pole work; parking restrictions will allow for remaining work to be completed on time. The contractor will only restrict what is necessary to complete the work for that given day.

As always, the Project Team appreciates

the patience that residents, businesses, and other Penn Ave. stakeholders have shown as the project comes to a close. ♦

**BELOW:** Workers plant trees along the new Penn Ave. streetscape. Benches, garbage and recycle cans, tree grates are among the finishing touches now appearing along the corridor. Photo by Wesley Davis.



Follow the Bloomfield-Garfield Corporation on Twitter (@BloomGarCorp)

### Properties on Penn Ave.

Interested in buying/renting a property located on or around Penn Ave? Interested in selling/renting your own property located on or around Penn Ave? The Penn Avenue web site has a page dedicated to commercial and residential listings ([www.pennavenue.org](http://www.pennavenue.org)). The properties listed represent those that we know to be available. If you would like your property listed on our site, please email details about the property, sale/rent price, approximate square footage, contact info, and photos (if available) to [Mainstreets@Bloomfield-Garfield.org](mailto:Mainstreets@Bloomfield-Garfield.org). Please use "Property Listing" as the subject line. Note: The BGC is not a real estate agent and does not arrange or broker the sale/lease of any properties. Instead, the BGC seeks to facilitate a way for potential developers or investors to locate owners who may or may not be interested in selling or leasing their property.



# Neighborhood FOCUS

## Garfield welcomes new grocery store with open arms and shopping bags

By Andrew McKeon *The Bulletin*

*Garfield* - Now that the ribbon has finally been cut and the doors are open, the new Aldi store at 5200 Penn Ave. is starting to make a lasting impression on Garfield. Folks came from near and far to be a part of the grand opening on Tuesday, November 10.

Amidst early morning rain showers, the new store manager cut the ribbon to usher in a line of curious customers. Once inside, everyone could see what the Aldi executives meant when they said 5200 Penn Ave. would be a “new look” store; wide lanes and high ceilings guide shoppers through Aldi’s new, more welcoming layout. Light beams through floor-to-ceiling windows to open the store up to the avenue; neighbors and passersby have been peeking in through these windows to check on the grocery store’s progress. Garfield resident Elizabeth Anderson says that, until construction was complete, she could not help but peer through the windows in anticipation. “Every day, I’ve been looking through the windows as I walk by,” Anderson said. “This store means everything to me and the other folks who live at the Fairmont Apartments. We shop a lot so, when all you have to do is walk up the street to get fresh foods, that’s phenomenal.”

“This [store] is already looking pretty successful,” Friendship resident Diana Ames observed during the grand opening. “I think that part of it is that people have already gotten a chance to get to know their product line at the other Aldi store on Baum Blvd.” What might scare most businesses does not intimidate a European grocery giant so, after conducting some market research, Aldi concluded it was practical to open up a new store within walking distance from one of its newer locations at 5631 Baum Blvd. The company does not believe the two nearby stores will cannibalize each other’s business. City Councilman Rev. Ricky Burgess knows this new grocery store can be a role-model for future developments along Penn Ave. “It’s going to be an anchor business that will help continue the revitalization of the entire area.”

When Aggie Brose, deputy director of the Bloomfield-Garfield Corporation (BGC), took to the podium to congratulate her

“We thought we could rely on Bottom Dollar at that site, but now that ALDI is there, I think it’s going to be a huge impact on the neighborhood. You can actually walk up Penn and go to the grocery store, do your shopping, walk home, and still have money in your pocket.”

– Garfield resident Mary Anne McGill



**ABOVE:** During Aldi’s grand opening, Ashley Wilson does something that would have been impossible just a few months prior: she shops for fresh produce in Garfield. The new store at 5200 Penn Ave. represents a victory for neighborhood access to affordable groceries. Photo by John Colombo.

fellow community advocates, she reminded them just how important the scope of the new Aldi store is to the whole East End. “This is more than a community store. This is a regional store. At our rallies, we had people from Stanton Heights, Polish Hill, Lawrenceville, and Garfield,” Brose proclaimed. “It never would have happened if the teamwork hadn’t been in place. What gave it that boost is the great leadership we had from our elected officials. They stood behind us all the way and convened meetings for us to get Aldi in the room.”

Months of meetings, rallies, and public advocacy have finally brought fresh groceries back to Garfield. Right where a Giant Eagle had served families for decades, a Bottom Dollar store just disappeared like a mirage in 2014. The new Aldi store brings it all back home for



**ABOVE:** During Aldi’s first day of business at 5200 Penn Ave., sales associate London Cox rings up milk and other essential items for Betty Glass-Howard from East Liberty. Photo by John Colombo.

Read our free report on Pittsburgh's public schools.

Information on neighborhood, magnet and charter schools.

www.apluschools.org

Toys for Magical Children

No batteries. No Screens.

**JUST IN-MADE IN VERMONT**

**Maple Landmark Wooden Train Sets**

**We specialize in American and European toys.**

**IN LAWRENCEVILLE**

4747 Hatfield St. at 48th

412.478.7099

**Holiday Hours:**

Tues. – Fri. 10 – 8; Sat. 10 – 6; Sun. 11 – 5



that corner of 5200 Penn Ave. Garfield native and neighborhood raconteur Mary Anne McGill looks forward to grocery shopping within walking distance from her Laurentian Hall (5321 Penn Ave.) home. "My people are excited. We haven't had a store there for twenty-some years. Last year, we thought we could rely on Bottom Dollar remaining at that site, but now that ALDI is there, I think it's going to be a huge impact on the neighborhood. You can actually walk up Penn and go to the grocery store, do your shopping, walk home, and still have money in your pocket."

Aldi's energy-efficient, progressive refrigeration methods, along with its other cost-saving measures, allow the grocer to provide fresh produce and valued home goods at an affordable price to consumers. The competitive price-point and quality of product Aldi offers does, however, present a few problems for some neighbors like Ms. Ames. "This is going to be dangerous for me," she admitted, "because it means easy access to great chocolate."

For Allegheny County Executive Rich Fitzgerald, this 5200 Penn Ave. location has really come full circle from when he was growing up just down the street. "My mother used to shop here when it was a Giant Eagle," Fitzgerald said. "I think she used to crash her cart into someone named Aggie Brose when they were both shopping at this location about forty years ago." Thanks to the efforts of community advocates like Brose and elected officials like Fitzgerald, local residents can once again bump into each other at a Penn Ave. grocery store in Garfield. ♦

**BELOW:** Garfield resident Minette Vaccariello is so excited to walk around a neighborhood grocery store that she snapped this selfie from the entrance. Photo by, well, Minette Vaccariello.



**ABOVE:** In November, the Bloomfield-Garfield Corporation (BGC) welcomed a newly elected Board of Directors to guide the organization into 2016 and beyond. The pictured BGC Board members are (left to right): Lilly Denhardt, Samantha Hahn Bui, vice president P.J. Maloney, Jarnele Fairclough, secretary Talisa Cameron, Catherine Curry, president Bill Cornell, James F. Maloney, Jeanette Coleman, Vera England, Renee Robinson, and Corey Buckner. Absent from the photo are treasurer Joe Junker, Zach Restelli, Rebekkah Ranallo, Felipe Palomo, and Shirley Gleditsch. Photo by Andrew McKeon.



## The Bloomfield-Garfield Corporation has an email newsletter!

Subscribe at [bit.ly/bgc\\_email](http://bit.ly/bgc_email) and have the latest community news delivered to your inbox.

## Ugly Concrete?

Steps, Ret. Walls, Pads, Foundations,  
Driveways, Sidewalks, and more!

Concrete Repair &  
Restoration

Don't replace your ugly concrete!  
Repair! It will save you money!

412-734-5432

[johnshomeimprovement.org](http://johnshomeimprovement.org)

PA# 050547 Fully insured

Credit cards accepted

Due to the success of The Big Easy, we are moving to a larger facility not only to facilitate our clients, but to expand our services, including daycare, boarding, a Café and grooming.  
Voted "Best Veterinary Hospital In The City" for two consecutive years.  
-Tribune Review

### Safety Measures - Facility Design

#### Safe Yards

Our outdoor play yards have a 6 feet fence with additional fencing to prevent escape.  
Our outdoor play yards also have artificial grass.

#### Clean Air

Weather permitting, we have multiple garage doors that will be open to allow fresh air and clean breeze filter through for your dogs to enjoy while they are playing. This will maintain a clean and healthy facility free from bacteria and odor.

#### Fire Protection

Our facility has a fire alarm and heat sensor that automatically dispatches the Fire Department in the event of smoke or heat detection. Staff is close by for emergencies.

#### Veterinarians On-Site

Big Easy Dog Daze is the ONLY DAYCARE/BOARDING FACILITY IN PITTSBURGH THAT HAS VETERINARIANS ON-SITE should immediate care be needed.

Baked Goods for Dogs by  
The Pet Bakery of Oakmont!

### Services

- Wellness & Preventative Care
- Senior Pet Care / Specialty Diets
- Micro Chipping
- Urgent Care
- Surgery / Radiology
- Laboratory, On-Site
- Pharmacy, On-Site

12 McCandless Avenue  
Upper Lawrenceville

412-908-9301  
[www.TBEAH.com](http://www.TBEAH.com)

Walk-In services end 30 minutes prior to close of business. After-Hour emergency services available.



**NEW LOCATION  
OPEN FOR BUSINESS!**

Big Easy's Doggy Daycare, Dog/Cat Boarding  
Please call us today for booking information



### Office Hours:

Mon-Thur: 9am-7pm  
Fri: 9am-6pm  
Sat: 9am-12pm

**CUTITTA  
CHIROPRACTIC**  
4733 Butler Street  
Pittsburgh PA 15201  
(412) 325-4100  
[Info@cutittachiro.com](mailto:Info@cutittachiro.com)

THE PERFECT  
STOCKING  
STUFFER

All massage therapy  
gift certificates  
10% off OR Buy 4  
get 1 free!  
(offer expires 12/31/2015)

**SAUER  
BROTHERS**  
Heating • Cooling • Boilers  
**412-782-1100**  
We've been installing  
**Residential  
Furnaces &  
Air Conditioners  
For Over  
60 Years**



# Three West Penn nurses take home 2015 Cameos of Caring awards

By Morgan Rupert Allegheny Health Network

*Bloomfield* - The University of Pittsburgh's School of Nursing established the Cameos of Caring program in 1999 to honor exceptional nurses who work for "acute care" hospitals.

For more than fifteen years, the program has worked to advance and promote the nursing profession, expanding its numerous award categories to recognize nurses in multiple fields.

Nominated by their peers at each facility, nurses are recognized for their individual work ethic, enthusiasm, professionalism, and delivery of patient care. This year, three nurses from Bloomfield's West Penn Hospital (4815 Liberty Ave.) took home Cameos of Caring awards.

The first nurse honored this year is Jeffrey Weir, the Chief Certified Registered Nurse Anesthetist (CRNA) at West Penn. Weir believes that being an advocate for nursing means not only providing excellent patient care, but creating a safe and helpful environment for the patient.

"There is no greater feeling in the world than knowing you have made a difference in the life of someone, whether it is a great event like the birth of a child, or the more

somber one of assisting a patient and family facing the inevitability of death," he said.

Like Weir, registered obstetrics nurse Sandra Stanley, has passion in all aspects of the care she gives. Stanley developed an innovative role for herself as Newborn Transitional Care Nurse, or "stork nurse" for short.

In her role as stork nurse, Stanley attends each birth to "place the sweet little one skin-to-skin on the mom's chest, helping her enjoy the first uninterrupted hour of bonding with the love of her life."

"I want every mother to feel like she is the only one to ever give birth and that, on that day, I am there to get her safely through," Stanley said. "To see a new father crying as he looks at his baby for the first time is the best reward I could ever receive."

The third West Penn honoree is registered nurse Susanne Wittmann, a Nursing Performance Improvement and Education Specialist with thirty years of clinical, managerial, and educational experience in the acute care setting.

Since starting at West Penn Hospital in 1985, Wittmann has worked hard to make

improve every facet of the hospital experience. "As a nurse and an analytical person, I am always observing and assessing situations, environments, actions, and outcomes to ask how we can make it better," Wittmann said. "We should continually raise the bar and strive to do better for our patients. This mission is what quality and safety are all about." ♦

TOP RIGHT: Sandra Stanley, RN

BOTTOM RIGHT: Jeff Weir, RNCA

BELOW: Susanne Wittmann, RN



## Expungement Workshop

By Abbie Godollei Bloomfield-Garfield Corporation

*Garfield* - In breaking down employment barriers, the Eastside Neighborhood Employment Center (ENEC) (5321 Penn Ave.) works to erase one of the biggest barriers facing potential employees: a criminal record. In November, the ENEC invited a lawyer from the Neighborhood Legal Services Association (NLSA) to hold a workshop with East End residents.

Offering free civil legal services to those in need, NLSA attorney Ed Van Stevenson, Jr., came to the Community Activity Center (113 N. Pacific Ave.) to educate attendees about the expungement process. Expungement is the removal of a charge or conviction from an individual's criminal record. In order for the NLSA to help with expungements, the disposition of the charge is needed. If the disposition says that the charge was dismissed, returned as "not guilty," or if the individual was given probation without a verdict, the NLSA may be able to help.

Stevenson and his agency can help with full or partial expungements; both can be beneficial to individuals seeking employment. Expungement can take up to a year but, in the long run, it may be worth doing just to open up new employment opportunities. It should be noted that all court fees must be paid in full before any expungement will be processed. Recently, a bill was introduced in the Pennsylvania General Assembly to expand expungement availability. The proposed bill would allow for nonviolent second and third-degree misdemeanor convictions to be expunged from an individual's record.

According to the proposed bill, those seeking expungement for these convictions must remain crime free for seven and ten years, respectively, before they can seek expungement. Under the current Pennsylvania expungement law, few individuals are found to be eligible. If the proposed bill passes, more people will be able to take advantage of the reforms and finally reenter the workforce.

Those interested in expungement services should contact the NLSA at 1-866-761-6572; simply say, "I can't get a job because of a criminal record." Those interested in finding employment opportunities or needing help with their resume or job search may contact the ENEC by calling 412-362-8580. ♦

For Everyone in the Flock and Every Room in the Nest, shop at

# ROBIN'S Nest

Unique Personal & Home Goods  
crafted by Local Artisans

free gift wrapping!

handmade:

- Home Decor • Wall Art
- Bath & Body • Hand Bags
- Jewelry • Accessories

412.362.2600

[f /RobinsNestPittsburgh](#)  
[www.RobinsNestPittsburgh.com](http://www.RobinsNestPittsburgh.com)

shop online!

WINTER HOURS: Tue - Sat 11AM - 7PM  
Sun 12PM - 4PM

visit us near the intersection of Penn + Negley  
5504 Penn Ave | Pittsburgh, PA 15206

# GET Covered. STAY Covered.

## HEALTH INSURANCE ENROLLMENT & RE-ENROLLMENT

# DIAL 2-1-1

for your **FREE YWCA** APPOINTMENT

eliminating racism  
empowering women  
**ywca**  
greater pittsburgh

**United Way**  
Allegheny County



## Stanton Heights moves to build hillside rain garden

By Lissa Geiger *Stanton Heights Neighborhood Association*

*Stanton Heights* - Heading out of Stanton Heights, drivers are always greeted by an expansive view of the Allegheny Cemetery in all its natural beauty. On a clear winter day, many neighbors enjoy the view down the Allegheny River Valley, and even a look at the stately cityscape of Downtown Pittsburgh.

However, one view nobody wants to behold is the aging, aluminum retaining wall and the crumbling, graffiti-covered staircase. This long-neglected stretch of Stanton Ave., intersecting with McCandless Ave., is a gateway to the neighborhood; it is an area of great need, but even greater potential.

This summer, the Stanton Heights Neighborhood Association (SHNA) commissioned students with the Penn State Center for Design to produce plans to turn this property into something both beautiful and environmentally beneficial. The plans call for the installation of rain gardens along the top and bottom of the hillside. Anchoring beds will complement the gardens to create a welcoming doorway between Stanton Heights and Lawrenceville.

Rain gardens use natural plant species that can withstand large amounts of water and nutrient concentrations as they absorb rainfall and stormwater runoff. This should help with the flooding and icing conditions along the roadways, in addition to helping stem the citywide problem of sewers overflowed with stormwater runoff.

Due to a federal consent decree, Allegheny County and the City of Pittsburgh are

required to meet ambitious goals to reduce sewage overflows over the next decade. The SHNA's Green Committee also expects this project to help prevent the spread of invasive species and hedge against any further erosion along the hillside.

To get the project underway, the association has applied for a city-sponsored "Love Your Block" grant that could fund the first phase of project implementation as soon as May 2016. This phase will begin with the installation of rain garden beds consisting of Little Bluestem and Prairie Dropseed grasses; perennials like columbine, tickseed, coneflower, daylilies, and black-eyed susans will also take root.

The grant would also provide assistance for graffiti-removal along the city steps leading down to the bus stop on Stanton Ave. City funds could even help paint the stairway railings, and beautify an aging retaining wall that has become a neighborhood eyesore.

Following the Love Your Block grant, the next steps for this project will be to apply for a Green Infrastructure Grant through the Pittsburgh Water and Sewer Authority (PWSA). Last year, this grant program funded seventeen projects throughout the city; the Stanton Heights rain garden is likely to be a competitive project in the next grant cycle.

Individuals interested in volunteering on this project or others like it can check out the SHNA green committee via [www.stantonheights.org](http://www.stantonheights.org) or via email at [stantonheightspgh@gmail.com](mailto:stantonheightspgh@gmail.com). ♦

## Highland Park opens its doors for pottery tour

By Kevin Fernando *Union Project*

**BELOW:** Guests browse through mugs, bowls, plates, and oil lamps at Keith Hershberger's house during last year's pottery tour. Ceramic works of all shapes, colors, and sizes will be available for perusal and purchase at this year's tour on the weekend of Dec. 12 and 13. Photo by Cara Rufenacht.



*Highland Park* - This December, the Union Project (801 N. Negley Ave.) will once again partner with local ceramic artists to present the fifth annual Highland Park Pottery Tour, where residents will get an intimate glimpse into the lives of local artists.

From 11 a.m. to 5 p.m. on the weekend of Dec. 12 and 13, participating artists will open their homes and studios to the public. Light refreshments and conversation with the artists will be served throughout the free, two-day event.

One of the founders, Keith Hershberger values the event as a way to connect with artists. "You don't often have the chance to meet the person that made something you use," he explained. "It adds a level of relationship, of intimacy and understanding to be able to talk to the artist and ask questions about the object. It's buying local to the extreme."

The work of twenty-four local ceramicists will be for sale during the tour – at five different stops all within walking distance. Along with tour veterans and organizers Joseph Delphia, Jeff Guerrero, and Jenna Vanden Brink, Hershberger will be welcoming attendees and selling work from his home with guest ceramicists.

Union Project Co-op artists - including Molly Bee, Kimberly Bloise, Mary Briggs, Carina Kooiman, Araina Marsden, Martha Matthews, Silvia Singh, Talon Smith, Gloria Tsang, and artist-in-residence Claire Thibodeau - will be at the Union Project stop on the tour, where they will sell their work and explain their craft to visitors.

The Highland Park Pottery Tour began in 2011 when potters from Highland Park came together to build connections within the ceramics community and the surrounding neighborhood. Since then, the event has brought artists and art-lovers together to buy local for the holidays.

Last year, over 250 people came out to meet artists, learn about their work, and purchase quality ceramic art for friends and loved ones. Building on the tour's growing profile, attendance levels are expected to increase to all-time highs this December.

In response to feedback received from prior participants, an exclusive preview event has been added to the tour. "Getting to spend time with local artists at the preview is a unique opportunity," Jeffrey Dorsey, executive director of Union Project, noted.

"Not to mention the perk of getting first dibs on all the beautiful artwork without all the crowds." The ticketed preview event will be held on Friday, Dec. 11, from 6 p.m. to 9 p.m.

The 2015 Highland Park Pottery Tour is sponsored by WESA, WYEP, and Standard Ceramics Supply Company. Those interested in learning more about this year's tour may contact [jenna@unionproject.com](mailto:jenna@unionproject.com); to see a map of the tour stops and purchase tickets to the preview event, visit <http://highlandparkpotterytour.com>.

Printed maps of the Highland Park Pottery Tour will be available at all five stops: 5800 Wellesley Ave; 716 N. Sheridan Ave., Apt. 2; 5505 Avondale Pl; 5511 Avondale Pl; and 801 N. Negley Ave. ♦



**ABOVE:** A functional rain garden could help curb massive erosion along this hillside in Stanton Heights. The Stanton Heights Neighborhood Association (SHNA) uses renderings like this one (created by Jeffrey Holzer) to plan its next steps for civil engineering projects that can benefit the neighborhood.



# Q&A with Mary Anne McGill, longtime Garfield resident and Laurentian Hall manager

By Kathleen Fennell *The Bulletin*

*Garfield - The Bulletin* recently sat down with Garfield native and neighborhood historian, Mary Anne McGill, to hear about some of her experiences during twenty-five years as manager of Laurentian Hall Apartments (5321 Penn Ave.). McGill, who will continue living at Laurentian Hall while new hire Dennis McElhaney takes over as manager, enjoyed reminiscing about the old days and connecting present-day Garfield with its untold histories.

**Q: How did Laurentian Hall come to be what it is today?**

A: “Laurentian Hall was a former school. Initially, in 1918, it was a grade school. Then, as the classes progressed, they kept building floors. My parents both went there; the nuns used to tell kids, ‘if you want to get to the second floor, you have to behave.’ I did twelve years in that building. In the early 80s, after it had been a number of different schools, the building went vacant, leaving the community and members of the St. Lawrence O’Toole Roman Catholic Church parish asking questions like, ‘what do we do with the building?’ We looked around at a growing senior community; we had more seniors than we had young families. So, our parish got together with the Bloomfield-Garfield Corporation and the community to explore the possibility of a senior apartment complex.”

**Q: How have the apartments and their tenants changed over time?**

A: “When we initially opened up, we had a nice mix of people that needed financial assistance and people that didn’t, but it changed over time. Now that we’re part of the HUD program, tenants must first qualify for low income in order to live here. Applicants have to be sixty-two years old or above, or mobility-impaired. We’re a little bit different than a lot of the other senior apartment buildings because, along with the efficiency units, we have many one and two-bedroom units. We had two sisters who moved in together. I had a mother and daughter, an aunt and a niece, husbands and wives, and friends sharing our two-bedroom [units] over the years.”

**Q: Speaking of domestic dwellings, how did your family end up living in Garfield?**

A: “My people were all immigrants from the Strip District who moved out to Garfield in the 1890s, when it was fresh country air. Down in the Strip at that point, it was all mills but, up here, their children could breathe. My ‘grand pap’ owned the very first row house next to the parking lot at Champion Commons, and my dad’s family lived on Kincaid St. Growing up, Garfield was a little bit of everything for me. I went to school with Germans, Italians, Polish, and mostly Irish.

**Q: How did you first get involved with Laurentian Hall?**

“As a member of the church committee, I was part of that planning process early on, but I backed off because I had to get another job to pay my bills. In 1989, the board of Laurentian Hall wrote me a letter asking if I would apply for the job of manager and then everything fell into place. The timing was perfect, just how it was supposed to be.”

**Q: What kind of duties did your job as manager entail?**

A: “There were days when I was Josephine the plumber, but most of the time I interviewed [potential tenants] and helped them to qualify. Since I lived in the building, I was on call 24/7, but it never bothered me. We have an emergency call bell system where, if someone pulled the cord in the middle of the night, I would respond. We’ve had fire, and even a flood. So, in 25 years, there hasn’t been too much that I haven’t come across, including some dead bodies. There were blessings and curses, but mostly blessings.”

**Q: Who will be taking over for you and will you still live there?**

A: “His name is Dennis; he’s also going to be working with the Garfield Glen housing development, and he’s also going to be running Laurentian Hall. He’s the new manager and I’m still on call and I still live there. I answer the bells.”

**Q: What is next for Mary Anne McGill?**

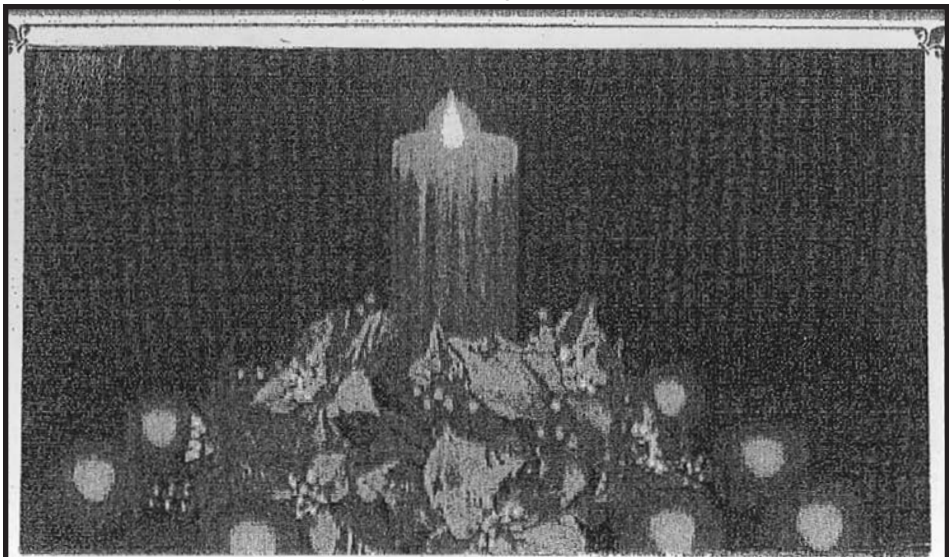
A: “That’s my dilemma. Somebody says, ‘McGill, you should be a tour guide. McGill, you should be a History major. McGill, you should do this, you should do that.’ Well, what does McGill want to do? I’m writing a story about my family. I’m building [historical fiction] from the early tales of my great, great grandparents.

**Q: Have you noticed a change in the social landscape of Garfield?**

A: “They’re younger people, children of my generation and they’re not afraid to live in the city. They’re willing to come back, to take that chance, because it’s affordable so far.”


**Q: Do you have a favorite memory of your time at Laurentian Hall?**

A: “The whole 25 years have been my favorite; it’s been a good ride. I’ve enjoyed watching [Laurentian Hall] grow and change... I helped to create a safe environment where my friends entrusted me with watching over their parents. But, you don’t look to legacy; you just do your job. Sometimes I try to remember to say, ‘Lord, let me help someone and harm no one.’ If you can do that, you’re helping.” ♦



*Our Remembrance Candle*

*During this Holiday Season, more than ever, our thoughts and prayers turn to those who have lost a loved one this past year. We are lighting a candle in our funeral home in remembrance of all the families that we have been privileged to serve. And it is in this spirit that we simply, but sincerely say... May the Peace and Joy of the Christmas Season be yours throughout the New Year.*



WALTER J.

**ZALEWSKI**

FUNERAL HOMES INC

*"Exceeding Your Expectations"*

LAWRENCEVILLE	POLISH HILL
Walter J Zalewski, Supervisor 216 Forty-fourth Street Pittsburgh, PA 15201-2893 412 682-3445	Joseph M Lapinski, Supervisor 3201 Dobson Street Pittsburgh, PA 15219-3735 412 682-1562

©MMX Zalewski F.H., Inc.



## In spite of redevelopment plans, East Liberty community garden plants seeds of hope

By Elizabeth Sensky *East Liberty Development, Inc.*

*East Liberty* - Surrounded by rail fencing and marked by plots of tilled earth, the Enright Community Garden is lush with vegetables, herbs, and fruits during the growing season; it is a food oasis on what was once forgotten land.

As the vegetables evolve, so does the neighborhood surrounding this small plot of land at S. Saint Clair and Topaz Sts. in East Liberty. Enright Community Garden is now situated at the center of a heated neighborhood debate across the street at Penn Plaza Apartments (5704 Penn Ave.). Recent efforts to save the adjoining Enright Parklet, from which the garden receives its name, have galvanized support among local park-goers and preservationists alike.

Yet, now that the developers' zoning requests have been approved and a lengthy planning process is already underway, the future of the park remains to be seen. Despite this uncertainty, it is clear that the garden's lot -which is owned by ELDI - will not be negatively impacted during Penn Plaza's redevelopment process.

Founded in 2008, the garden stemmed from local resident Sallyann Kluz's idea to transform a previously abandoned, corner lot, into greater possibilities. "As a concerned resident and as someone who's very interested and passionate about gardening, I had been pestering the community group to say, 'Hey, we have this vacant lot, what can we do with it? Can we get control of it?'" Kluz explained.

"This was at the same time as when Whole Foods officials were starting to say, 'I think we should do a community garden project.'"

As a marketing director for Whole Foods Market (5880 Centre Ave.) and a passionate gardener eager to teach children about the farm-to-table concept, Kim Wynnnyckj helped make the idea a reality

for East Liberty. She reached out to East Liberty Development, Inc. (ELDI) and worked with the organization and other local nonprofits, including Grow Pittsburgh, to put the lot to good use.

Since 2008, the garden has become a centerpiece of community engagement and service; food harvested from the garden is donated to East End Cooperative Ministries (6140 Station St.), served in lunches at the nearby Kentucky Avenue School (5701 Fifth Ave.), and used for other community partner events.

But, the yields of the lot go beyond just the tangible to also put the garden in the hands of the next generation, with weekly classes educating students about where and how their food is grown.

Maintained and run by four Whole Foods team members for seven years now, the garden has been an inspiration for communities across the area. Garden coordinator Valerie Testa knows the garden needs to grow with the needs of the neighborhood.

"Currently, we are trying to get the garden certified as 'pollinator friendly,'" she said. "We are also expanding our community gardening classes every year by partnering with local suppliers and educators. Recently, we've partnered with local nonprofit Repair the World."

Now that East Liberty is becoming more socially and ecologically diverse, the garden's role is doubly felt; other stores are even calling Testa for advice on how to start their own gardens.

"Being able to work with such a wide array of folks from different backgrounds has been the most memorable part of working in the garden, especially educating folks about the rewards of cultivating food." Testa said. "It really brings home our core value of serving and supporting our local and global communities." ♦

## Wishing you the best this holiday season.

We at West Penn Hospital hope your holidays  
are filled with good health and happiness.



**Allegheny**  
Health Network

**Health for All.**

**BELOW:** Students from Sci-Tech and Obama Academy afterschool programs attend the "Youth Places" Historically Black Colleges and Universities (HBCU) Fair on Nov. 5. Photo courtesy of LaTrina Hall.





the **Bulletin** BOARD

**Local Events**  
**Classes**  
**Announcements**  
**Fundraisers**

**Sorry, but we do not accept listings by phone.**

The Bulletin Board publishes listings of volunteer opportunities, free or low-cost events and classes, fundraisers, and services that are of particular interest to our neighborhoods. Listings are published on a space-available basis; we cannot guarantee any placement. Announcements for the **January 2016** issue of *The Bulletin* are due by **Dec. 17**. Please submit listings using our online form at [http://bit.ly/bulletin\\_submit](http://bit.ly/bulletin_submit).

### CARL Program Home Loans

Thinking about buying a “fixer-upper” in the Garfield area? If so, you may qualify for the Community Acquisition & Rehabilitation Loan (CARL) program.

The CARL program combines a mortgage loan and a rehabilitation loan, which allows you to buy and rehabilitate a home with one affordable financing product! For more information or a list of participating lenders, contact Samuel Su at [ssu@pcrg.org](mailto:ssu@pcrg.org) or call 412-391-6732 (ext. 210).





### You are Invited...

## To the Bloomfield-Garfield Family Holiday Party!!!

Friday, December 11th  
BGC Community Activity Center  
113 North Pacific Ave.  
**5:30PM – 8:00PM**

### Activities include:

- Visit Santa and get your photo taken!
- Enjoy free hot chocolate and cookies!
- Make a holiday card & ornament!
- Enjoy holiday music and a beautiful tree!

*If you would like to lead a children's activity, make a donation, decorate, or help with promoting the party, please call the Bloomfield-Garfield Corporation at 412-441-6950 ext17.*



**December 3**

**LAWRENCEVILLE**

**Free Microsoft Excel Class**

Goodwill's Computer Lab, 118 52nd St. from 6 to 8 p.m The Carnegie Library of Pittsburgh – Lawrenceville and Goodwill of Southwestern Pennsylvania have teamed up to offer free computer classes to residents who want to brush up on their computer skills. The class topic on December 3 is Microsoft Excel. Students will be introduced to Microsoft Word and will learn basic editing and formatting skills. Participants must register in advance by calling 412-632-1842

**Light Up Lawrenceville**

Allegheny Cemetery Driveway on Butler Street from 6 to 7 p.m. Tree Lighting: The evening is a celebration that involves treats, carols, and of course the annual tree lighting to launch the holiday season.

**Beat the Winter Blues Party**

Lawrenceville Healthy Living Senior Center, 4600 Butler Street from LU's Senior AdvantAGE committee is hosting a free holiday party, with cookies and carol sing-a-longs. Meet neighbors and celebrate "the most wonderful time of the year!" Residents aged 55 and up.

**GARFIELD**

**Flu Clinic**

Visit the Bloomfield-Garfield Family Health Center (5475 Penn Ave.) between 3:00 and 6:00 p.m. to get a flu shot. For adults only. Flu shots cost \$15 but they are FREE for those with chronic conditions. Call the Bloomfield-Garfield Family Health Center for more information, 412-361-7562.

**#ThankstoKiva Happy Hour**

Mixtape, 4907 Penn Avenue from 5:30 to 7:30 p.m. Join Kiva City Pittsburgh borrowers, trustees, and lenders as we wrap up our #ThankstoKiva campaign and also say thanks to Jennifer Hamilton, Kiva Fellow, for the awesome work she's done in Pittsburgh this fall! Come out to mingle and network with Kiva Zip entrepreneurs and supporters while you enjoy food and drink from Mixtape, a new music gallery and cafe on Penn Avenue in Garfield. Not a Kiva Zip borrower, trustee, or lender (yet)? Even better! This casual evening will be a great way to learn about Kiva Zip's unique 0% interest, crowdfunded loans from people who are directly involved.

**December 4**

**BLOOMFIELD**

**Paintings By Irma Freeman**

Irma Freeman Center, 5006 Penn Avenue from 7 to 10 p.m. This special exhibition entitled “Natural Renderings: Paintings by Irma Freeman” is wonderfully reflective, and even meditative, as Irma Freeman takes the observer into an almost spiritual journey within and beyond her compositions of the natural world.

**Art by Shelby Jane**

Bantha Tea Bar, 5002 Penn Avenue from 6 to 11 p.m. Stop by to view the closing show of Shelby Jane's artwork at Bantha Tea Bar.

**GARFIELD**

**Most Wanted Fine Art Winter Spirits Art Show and Krampus Crawl**

Most Wanted Fine Art, 5015 Penn Ave from 6 to 10 p.m. This is the fourth winter folklore art show in the MWFA basement. As in years previous, Krampus will be on hand to hand out floggings for wicked at heart. Costume artists and guests alike are encouraged to dress up. We will parade down the Unblurred Gallery Crawl Route at 8 p.m. starting at Most Wanted Fine Art and walking to the glass center and back around. A Family Friendly Krampus Crawl! There will be a traditional art show, an ornament exhibit, as well as costumed characters.

**EAST LIBERTY**

**East Liberty Valley Historical Society 2015 Lecture Series**

East Liberty Presbyterian Church 116 S. Highland Avenue, Room 234 at 7:30 p.m. "In Plain Sight: Fragments of a Vanished East End" ELVHS Lecture Series, First Fridays this Fall. Free to the public!

**December 5**

**LAWRENCEVILLE**

**Cookie Mall**

Boys and Girls Club, 4600 Butler Street from 10 a.m. to 4 p.m. A free party that occurs the 1st Saturday AFTER the full Thanksgiving weekend. From 11 a.m. to 2 p.m. families can enjoy crafts, cookies, gifts for every child, and pictures with Santa. This event is held within the Joy of Cookies, Cookie Tour's Cookie Mall; a great event where



# Volunteer Opportunities & Services

local groups sell homemade goods to benefit the work they do in the community!

## Marc Harshman Book Signing

Gallery on 43rd Street, 187 43rd Street from 11 a.m. to 2 p.m. Meet Marc Harshman who will be signing his newest children's book, Mountain Christmas. Call 412-683-6488 for more information.

December 6

### LAWRENCEVILLE

## Ron Donoughe Book Signing

Gallery on 43rd Street, 187 43rd Street from 1 p.m. to 4 p.m. Local artist Ron Donoughe will be signing his new book, 90 Pittsburgh Neighborhoods. Call 412-683-6488 for more information.

December 9

### GARFIELD

## I <3 My City Party

Assemble, 5125 Penn Avenue from 4 to 6 p.m. What do you love most about Pittsburgh? The sports teams? The slang? The crazy topography, or all the fun things to explore? Share your story and be a part of Assemble's Hyperlocal Show at the I <3 My City Learning Party on December 9th. You might even discover something new about Pittsburgh too! This event is free, open to all ages, and features fun hands-on activities led by local makers, scientists, artists, and technologists. All materials provided. For more info, please visit <http://assemblepggh.org>, or contact [hillary@assemblepggh.org](mailto:hillary@assemblepggh.org).

December 11

### NORTH SIDE

## Old Allegheny Victorian

## SOJOURNER HOUSE WELCOMES WOMEN IN NEED

To be eligible to participate in treatment at Sojourner House (5907 Penn Ave.), a woman must be eighteen years or older, have at least one child twelve years old or younger, be actively seeking custody of a child, or pregnant.

The Single County Authority and providers that serve the injection drug abuse population shall give preference to treatment as follows: 1) Pregnant, injection drug users; 2) pregnant substance users; 3) injection drug users; 4) overdose survivors; 5) veterans; and all others. For more information, call 412-441-7783.

## Christmas House Tour

Tours originating at Calvary United Methodist Church at 971 Beech Avenue between 5 p.m. and 8 p.m. on Friday, December 11 and 10 a.m. and 8 p.m. Saturday, December 12. This popular guided tour will feature six restored Victorian homes and the historic Calvary United Methodist Church, famous for its beautiful Louis Tiffany stained glass windows. Also, visit one of the world's largest toy train museums housed in Holmes Hall. The private collection features hundreds of colorful train sets from the early 20th century; many of them rolling through enchanting miniature villages.

December 14

### BLOOMFIELD

## Bloomfield Development Corporation Monthly Meeting

Shepherd Wellness Community building, 4800 Sciota Street at 6:30 p.m. Bloomfield Development Corporation hosts a community-wide meeting every other month. Topics include public safety, community priorities, and upcoming activities and events. For more information contact 412.681.8800 or [christina@bloomfieldnow.org](mailto:christina@bloomfieldnow.org).

December 18

### BLOOMFIELD

## Winter Wonderland Circus Extravaganza

Pittsburgh Dance Center, 4765 Liberty Avenue from 6 to 8 p.m.. Head over to the Winter Wonderland Circus Extravaganza for a visit with Santa, cookie decorating, tree trimming, holiday music, and a ton of circus fun. \$5.00 admission for children and parents are free.

December 19

### EAST LIBERTY

## Kelly Strayhorn Theater's

## Let's Move!

Kelly Strayhorn Theater 5941 Penn Ave at 11 a.m. A winter-themed dance extravaganza kicks off the holiday season at KST. Enjoy festive music, crafts, and treats for the whole family.

December 20

### GARFIELD

## Morningside C.O.G.I.C. Annual Christmas Program

5173 Dearborn Street at 4 p.m. Pastor Lamont B. Shields presents the Annual Christmas Program. Come and bring your friends and enjoy our Holiday program.

Ongoing

### EAST LIBERTY

## Kelly Strayhorn Theater's Alloy School

Kelly Strayhorn Theater 5941 Penn Ave. Professional dancers and master teachers guide learning at KST's Alloy school for children of all ages on Saturdays September 19 through December 19. Toddlers to tweens can enjoy classes in a wide range of subjects including dance, acting, and yoga in a creative, non-competitive community setting. Drop in a class for \$5, take in 6 weeks of learning for \$30 or enjoy the program for 12 weeks for \$60.

### GARFIELD

## Health Insurance Enrollment

December 5, 12, 19 from 12 to 4 p.m. at Eastside Neighborhood Employment Center, 5321 Penn Avenue. Meet with a health insurance counselor for assistance selecting and enrolling in an affordable health care plan. Call 412-206-1298 to register.

## IMAGINE YOUR CLASSIFIED HERE!

The Bulletin helps local advertisers reach local customers. For more information about advertising in The Bulletin, please call 412-441-6950 (ext. 13) or email [Bulletin@Bloomfield-Garfield.org](mailto:Bulletin@Bloomfield-Garfield.org)

# Classifieds

## Personal

Walking Buddies Needed - 49 yr old female seeks someone to walk with bi-daily, starting <1 mile for health improvement. Contact: Sheila (412-916-6862).

## Housing

Braddock house; two bedrooms, patio, rent/rent-to-own/sale. Call 412-271-9343.

## Services

## PRO TEC PEST & TERMITE SERVICE

"Quality Service at an Affordable Price"

*John Cygnarowicz*  
**412-628-6893**

## LOCAL CONTRACT DRIVERS NEEDED

Jumpstart/fuel deliveries/tire changes.  
Vehicle required, no experience necessary

**Call 267-270-5225**

## Your Friendly Driver

Reasonable rates. I wait while you shop; for doctor's appointments, other errands. Cleaning service also available.

**Call John at 412-969-7497**

## A Hauling Job?

We clear basements, yards, garages, attics, estates

***Fast, Reliable, Reasonable***

Also demolition work, minor repairs, grass cutting, salvage credit.

412-687-6928 **Call Walt** 412-773-0599

**January 2016 Bulletin Deadline: December 11**

Download advertising information: [bit.ly/bulletin\\_ad](http://bit.ly/bulletin_ad)

Download guidelines for stories, photos, and notices: [bit.ly/bulletin\\_news](http://bit.ly/bulletin_news)



**BELOW:** Bloomfield-Garfield Corporation (BGC) president Bill Cornell (left) and executive director Rick Swartz (right) present the 2015 Father Leo Henry Founder's Award to Garth Taylor (center) for his exceptional volunteerism in the Garfield community. Taylor is a coach of the Garfield Gators youth football team and a program director for Garfield's youth sports and social development hub, Brothers and Sisters Emerging (BASE). Photo by Wesley Davis.



## WELCOMING NEW PATIENTS

Dr. James E. Blaugrund of Metropolitan Ear, Nose and Throat Associates is now accepting new patients at his office at UPMC St. Margaret.

### James E. Blaugrund, MD, FACS

Dr. Blaugrund received his medical degree from Yale University School of Medicine, graduating with honors. He completed his residency in otolaryngology at Johns Hopkins Hospital. Dr. Blaugrund completed a fellowship in Head and Neck Surgery and Laryngology at Johns Hopkins Hospital prior to joining the faculty of the University of Pennsylvania. Dr. Blaugrund joined Metropolitan Ear, Nose and Throat Associates in 2001. He specializes in general otolaryngology, head and neck surgery, thyroid/parathyroid surgery, and advanced laryngology.

To schedule an appointment, or for more information, call 724-772-2711.

UPMC St. Margaret  
200 Delafield Road  
Suite 3030  
Pittsburgh, PA 15215

UPMC St. Margaret

## Lawrenceville cookie tour brings more dough than ever to Butler St.

By Genevieve Barbee Lawrenceville Corporation

Lawrenceville - Forty locations along Butler St. are participating in this year's Joy of Cookies Tour that runs from Thursday, Dec. 3 through Sunday, Dec. 6. Starting around 10 a.m. and ending at approximately 6 p.m. each day of the tour, participating businesses will offer cookies during their regular business hours. With the incredible growth of new businesses in Upper Lawrenceville (between 57th St. and Stanton Ave.), this year marks the most cookie stops ever in this part of the neighborhood.

In 2000, a small group of Lawrenceville shop owners noticed they were each organizing holiday open houses on different weekends in December. Banding together to share mailing lists and throw a joint party, they decided to offer sample-sized cookies in an effort to drum up some foot traffic. One of the original participants was the Gallery on 43rd Street (187 43rd St.), where owner and artist Mary Coleman made about three dozen cookies for the first year of the tour. "I ran out," she recalled. "Then, I was wondering what I was going to do for Sunday." Luckily for Coleman, when she opened her doors for the tour's final day, a friend and neighbor from Highland Park was ready with backup cookies; she happened to have baked them using one of the recipe cards Coleman had out the day before.

Today, businesses are asked to make at minimum forty dozen sample sized cookies for excited tour goers. Over the last year, more than twenty different businesses have opened their doors in Lawrenceville, especially in the 10th Ward. Liz Quesnelle, owner of The Gilded Girl - a beauty emporium - is excited that this section of Lawrenceville is transforming into a shopping destination. She will be pairing her cookies to match sweet beauty products like exfoliating sugar scrubs. On Saturday, Dec. 5, a trolley will be circulating through the neighborhood - from 12 p.m. until 6 p.m. - to help visitors park and ride for the tour. Tour information and happenings can be found at [lvpgh.com/cookie-tour](http://lvpgh.com/cookie-tour). ♦

## County announces healthy restaurant initiative

By Melissa Wade Allegheny County Health Department

Pittsburgh - Dr. Karen Hacker, Director of the Allegheny County Health Department (ACHD), recently announced the launch of the *Live Well Restaurants* initiative. "*Live Well Allegheny* is all about improving our health and restaurants can play an important role in raising awareness about healthy eating and living a healthy lifestyle," Dr. Hacker said. "The *Live Well Restaurants* initiative will recognize restaurants that incorporate healthy options in their menus - ranging from low fat, low salt items to providing customers with nutritional information. We are excited to have the endorsement of the Western Pennsylvania Restaurant & Lodging Association in this effort and we look forward to seeing new members become our first *Live Well Restaurants*."

*Live Well Allegheny* was launched in January 2014 as a comprehensive, innovative strategy on wellness that embraces a broad concept of living well to include physical health, mental wellness, personal and community safety, prevention and preparedness, and much more. Participants in the *Live Well Restaurants* campaign are tied into the Health Department's staff. While monetary resources are not part of the initiative, participating restaurants can receive helpful, promotional materials and information.

To be designated as a *Live Well Restaurant*, the business must first indicate its intent to work with Allegheny County to accomplish the goals of the *Live Well Allegheny* campaign. At a minimum, restaurants must commit to eliminating trans-fat oils, being smoke free, and not selling tobacco products. They must also commit to at least four action steps as detailed on the *Live Well Allegheny* web site; examples include providing low calorie salad dressing, nutritional information, and offering healthy alternatives as side dishes.

By offering an array of healthier options such as smaller portions and smaller soft drink sizes, restaurants can help raise awareness of healthier options. The *Live Well* brand will help customers identify restaurants that offer these opportunities.

As County Executive Rich Fitzgerald noted, "I'm thrilled to see restaurants in our county help our residents become healthier and make healthier choices. I commend Dr. Hacker, the Health Board and the ACHD staff on this initiative and look forward to seeing even more initiatives in our community." For more information on the *Live Well Allegheny* campaign, including how to become a *Live Well Restaurant*, visit <http://LiveWellAllegheny.com>. ♦