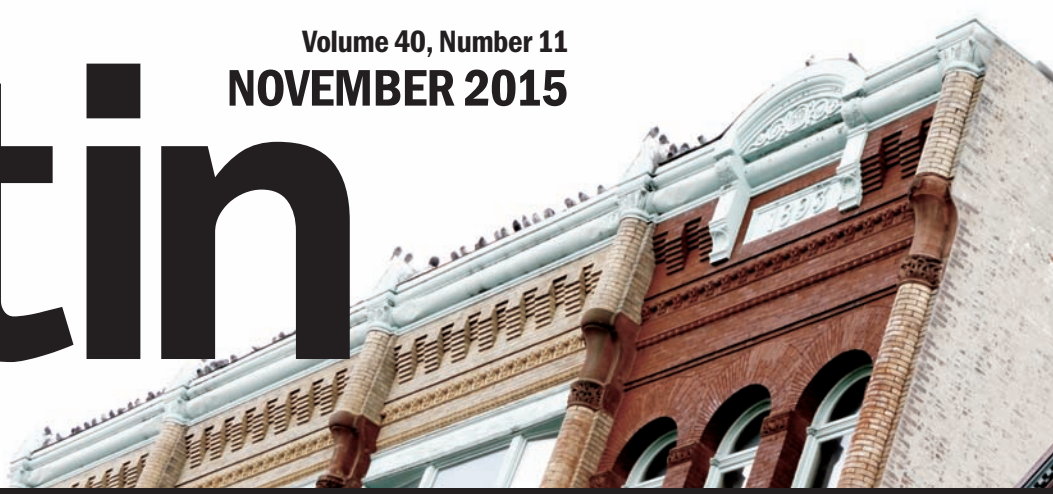


Serving Bloomfield, Friendship, Garfield, East Liberty,  
Lawrenceville, and Stanton Heights Since 1975



## Groceries in Garfield: ALDI opens new store on Penn Ave.

By Andrew McKeon *The Bulletin*

*Garfield* - When ALDI opens up shop at 5200 Penn Ave. in Garfield, it will mean much more than just another grocery store. After the unfortunate closure of a Giant Eagle grocery store on the same block decades ago, entire generations of Garfield residents have grown up without a grocery store located within walking distance from their homes.

Many were hopeful eighteen months ago when a new grocer came to the corner of Penn and S. Pacific Aves. Then, within months of opening up its new East End location, Bottom Dollar made like a mirage and disappeared from the whole southwestern Pennsylvania region.

Now, a forward-thinking, European grocer has responded to community members' long-standing request of, "ALDI, won't you be our neighbor?" by investing in the Garfield neighborhood.

On Nov. 10, ALDI will open its 5200 Penn Ave. location to the public with a ribbon-cutting ceremony at 8:15 a.m. Elected officials and community leaders will then welcome everyone inside to tour the new facility and do some

See **ALDI** | page 3



**ABOVE:** Local residents march down Liberty Ave. on Saturday, Oct. 10, as the Columbus Day Parade makes its way through Bloomfield. Many participants, like the Pampena family (pictured above), paraded their family pride around the streets as they celebrated ethnic heritage for the holiday. Have another look at the Columbus Day Parade festivities on Page 10. Photo by John Colombo.

## City moves ahead on future of Penn Plaza; opposition forming

By Rick Swartz *Bloomfield-Garfield Corporation*

*East Liberty* - This past summer, when the remaining 220 residents of a privately-owned apartment complex at Penn and S. Negley Aves. were notified by the complex's owners

See **Penn Plaza** | page 4



## Going out in style: clothing store closing doors after ninety years

By Rachel Kennedy *Junior League of Pittsburgh, Inc.*

*Bloomfield* - On Nov.21, the Junior League of Pittsburgh, Inc. (JLP), a non-profit organization of women volunteers, will close its year-round fundraiser, the Wear After Shop

See **Wear After Shop** | page 9



**ABOVE:** Mayor Bill Peduto (right) joined other elected officials at the corner of Penn and Shady Aves. in East Liberty for an Oct. 13 ribbon-cutting to commemorate the completion of the Martin Luther King, Jr. East Busway. Allegheny County Executive Rich Fitzgerald (second from right) looks on as Rob Stephany, a director with the Heinz Endowments, addresses the audience on the benefits of tying a transit center together with new residential and commercial development. Photo by Andrew McKeon.

NON-PROFIT  
U.S. POSTAGE  
PAID  
PITTSBURGH, PA  
Permit No. 2403



# TAKING MEDICATIONS JUST GOT EASIER!

## Introducing The AccuPac Pill Box!

From regular prescription bottles...

We sort your medications into doses for each day and time and seal them in convenient, labeled packets

Packets come in strips in the order they are to be taken

We organize your refills and give you a dispensing box containing your packets for that month.

**CALL TO GET STARTED TODAY!**

### Relieve all the worry of missed doses.

- NO Sorting Pills
- NO Trips to the Pharmacy
- NO Calling in Refills
- NO Cost for Delivery
- NO Stress
- NO Extra Charge

### Transfer Your Prescriptions and Get a Credit of

<b>\$10</b>	<b>\$25</b>	<b>\$35</b>	<b>\$50</b>
1	2	3	4 or more
Bottle	Bottles	Bottles	Bottles

With this coupon. Not valid on state or federal plans. Offer expires in 180 days. Must bring all competitors' bottles in at same time to get your credit.

All insurances accepted, Including 90-day UPMC plans and 90-day Medicare D Plans!

*Same great service you've come to expect!*

5020 Centre Avenue  
15213  
(Corner of Centre & Morewood, ext to Shadyside Hospital)

\*See store for details.

## PUBLIC SAFETY UPDATE

By Aggie Brose Bloomfield-Garfield Corporation

Garfield - Multiple burglaries and robberies have wracked Penn Ave. businesses over the past three months. Two Garfield eateries, Spak Bros. Pizza (5107 Penn Ave.) and BFG Café (5335 Penn Ave.), have been burglarized while their businesses were closed at night.

Meanwhile, staff members at Princess Hair and Beauty Supply (5152 Penn Ave.) and K2 Convenience Store (4900 Penn Ave.) were robbed in broad daylight,

during regular business hours.

All of the aforementioned incidents are under investigation, but arrests have not yet been made. Anyone who would like to furnish information about these incidents is encouraged to call the Pittsburgh Bureau of Police at 412-323-7161; caller confidentiality is guaranteed. Business owners and residents on Penn Ave. are advised to maintain street-side lighting and beware of any suspicious activity. ♦

## West Penn Hospital opens new ICU

By Patty Toner Allegheny Health Network



**ABOVE:** During a September ribbon-cutting at West Penn Hospital (4815 Liberty Ave.), hospital representatives joined community leaders like the Bloomfield-Garfield Corporation's Deputy Director, Aggie Brose (second from right), to welcome a new Intensive Care Unit (ICU) to Bloomfield. The new ICU will help upgrade the hospital's cardiovascular care and provide better facilities for patients requiring catheterization. Photo courtesy of Allegheny Health Network.

West Penn Hospital (WPH) proudly introduced a new, state-of-the-art cardiac Intensive Care Unit (ICU) in September. The facility, which boasts sixteen beds, speaks to the growth of the Bloomfield hospital's cardiovascular program since it reopened in 2013.

The new ICU offers high-level care to adult patients who require intensive, round-the-clock monitoring and post-surgical attention for cardiovascular disease. The West Penn Cardiovascular Institute now offers patients a full range of advanced diagnostic and therapeutic cardiovascular services: heart bypass and valve replacement surgery, pacemaker and defibrillator implantation, and interventional cardiac catheterization.

Two state-of-the-art, cardiac catheterization laboratories, as well as an electrophysiology laboratory and monitored patient rooms are also on-site at the Institute. According to WPH's director of cardiac surgery, George Magovern, MD, "Cardiovascular disease has a greater impact on our community than any other health issue, particularly given western Pennsylvania's aging, at-risk population. The Cardiac ICU continues West Penn Hospital's legacy of offering excellent patient care and providing the community with the advanced, comprehensive services it needs and expects."

In his position as medical director of the Open Heart Cardiac Surgery program at WPH, Ross F. DiMarco, MD, knows how critical the new ICU is to better care for his cardiac patients who have suffered a heart attack, heart failure, or pulmonary hypertension.

"The West Penn Cardiovascular Institute provides us with the tools and resources we need to provide exceptional care to those suffering from cardiovascular disease," Dr. DiMarco said. "With the new Cardiac ICU, we have greatly expanded and enhanced our ability to care for those suffering from even the most complex cardiovascular disorders." ♦



## 40 Years Strong



The Bloomfield-Garfield Corporation (BGC) will hold its Annual Luncheon on Friday, November 20, at the Pittsburgh Athletic Association (4215 Fifth Ave.) in Oakland - from 11:30 a.m. to 2:00 p.m. Allegheny County Executive Rich Fitzgerald will introduce keynote speaker Dennis Davin, Secretary of the Pennsylvania Department of Community & Economic Development. For additional information, please contact the BGC's Deputy Director, Aggie Brose, at 412-441-6950 (ext. 15) or [Aggie@Bloomfield-Garfield.org](mailto:Aggie@Bloomfield-Garfield.org).

Emcee: P.J. Maloney, KQV Radio

Introduction of Keynote Speaker: Rich Fitzgerald,

Allegheny County Executive

Keynote Speaker: Dennis Davin,

Secretary, PA Dept. of Community & Economic Development

Public Service Honoree: Tim O'Connor, Bethel Park Police Chief /

Former Zone 5 Commander for Pittsburgh Police

Pioneer Honoree: Rev. John Creasy,

Director, Garfield Community Farm

## the Bulletin

A publication of the  
Bloomfield-Garfield  
Corporation



Serving Bloomfield, Friendship, Garfield, East Liberty, Lawrenceville, and Stanton Heights Since 1975 with the mission of reporting on activities affecting those communities and offering an opportunity for residents to express their opinions and exchange ideas.

### Volume 40, Number 11

The deadline for the December issue is **Tuesday, November 10.**

**Editorial and Advertising Offices** • 5149 Penn Avenue • Pittsburgh, PA 15224  
412.441.6950 ext. 13 • (Fax) 412.441.6956 • [bulletin@bloomfield-garfield.org](mailto:bulletin@bloomfield-garfield.org)

**Total Circulation** • 21,000 Copies • 18,000 Mailed • 3,000 Bulk Dropped

**Staff** • Andrew McKeon, Editor • Kathleen Fennell, Editorial Intern • Martin Pochapin, Advertising • Rick Swartz, Proofreading • Mary Anne Stevanus, Office Manager • Trib Total Media, Printing & Mailing • CISP, Distribution

**Board Meetings** are held by the Bloomfield-Garfield Corporation at 7 p.m. on the second Monday of each month, at 5321 Penn Ave., and are open to the public. The opinions expressed herein are not necessarily those of the publisher.

The Bulletin is made possible in part by funding from Dollar Bank, WesBanco Bank, Allegheny Valley Bank, and The Heinz Endowments.

[www.bloomfield-garfield.org](http://www.bloomfield-garfield.org) © 2015 by Bloomfield-Garfield Corporation

**Thank you!** The Bloomfield-Garfield Corporation would like to acknowledge its main corporate partners: WesBanco Bank, Dollar Bank, and Allegheny Valley Bank. Thanks to First Niagara Bank, PNC Bank, Allegheny Health Network, Citizens Bank, The City of Pittsburgh, the Sprout Fund, *The Bulletin's* advertisers, and all our members.

## ALDI from page 1

window-shopping. ALDI invites the public to browse and sample items all day long, enter an on-site sweepstakes for a chance to win a year's supply of fresh produce, and even receive a special gift bag at the door.

At 9 a.m. the next morning, ALDI will hold its official grand opening and – for the first time in almost a year – Garfield residents will get another chance to walk down the street and shop for groceries. And, according to ALDI, the grocery store is here to stay.

As J.R. Perry, vice president of ALDI's Saxonburg division, told *The Bulletin*, "We look forward to bringing the East End community fresh, affordable groceries for many years to come."

The new store features high ceilings and natural lighting; its energy-saving refrigeration and environmentally-friendly building materials make for a small carbon footprint. Laid out with customers in mind, the floor's "open carton" displays are easy to navigate. ALDI's cost-efficient "smart practices" might mystify some

shoppers, but they are actually designed to save money. The grocer encourages its customers to bring their own shopping bags and make use of its cart rental system.

Carrying nearly eighty varieties of fruits and vegetables, including organic produce, ALDI sells more than 1,300 of the most frequently purchased grocery and household items under its exclusive brands; prices are up to fifty percent less than traditional supermarkets.

"ALDI is committed to bringing customers the highest quality products at the lowest possible prices," Perry promised. "We're excited to invite new customers to take a fresh look at ALDI by visiting our new store at 5200 Penn Ave."

As a testament of good faith, ALDI is restoring some light fixtures to illuminate a community-crafted, glass mural that decorates the Penn Ave. face of the building. For years, the mural was dormant in a "food desert" but, now that ALDI has arrived to light the way on Penn Ave., it can once again become a neighborhood beacon of good things in store. ♦

**ALDI invites you to the Grand Opening celebration of its new Pittsburgh store.**

**Tuesday, November 10, 2015**  
7:45 a.m. Media Preview  
8:15 a.m. Ribbon-Cutting Ceremony

**Wednesday, November 11, 2015**  
9 a.m. Official Grand Opening

**ALDI**  
5200 Penn Ave.  
Pittsburgh, PA 15224

Known for its premium exclusive brands, ALDI offers high-quality grocery items at incredibly low prices.

Sample exclusive brands, tour the new store and take home a taste of ALDI with a special gift bag.



# Penn Plaza

from page 1

that their month-to-month leases were being cancelled, advocates from the community called upon Mayor Bill Peduto to help forestall their eviction. The Mayor and his staff responded and, within ninety days, a deal was struck with the owners of the Penn Plaza Apartments that will now afford the tenants more time and some financial resources to find new living accommodations over the next eighteen months.

Built during the urban renewal era following World War II, Penn Plaza consists of two buildings that stretch along Penn Ave. - from Negley Ave. to Penn Circle. The property's current owners, the Gumberg development interests, evidently decided that they were no longer interested in maintaining the apartment complex as is; all the building's tenants were soon notified to relocate before the winter arrived. Current reports indicate that, of the 312-unit complex, one third of the units are already vacant.

In order to win the eviction delay and relocation assistance for the tenants from Penn Plaza's owners, the Mayor had to make a number of pledges to the Gumberg interests. These were outlined in a Sept. 28 memorandum that was executed by Mayor Peduto; Kevin Acklin (in his capacity as chair of the Board of the Urban Redevelopment Authority (URA)); Jonathan Kamin, legal counsel to the Gumberg interests; and Lillian Grate, identified in the memorandum as the president of the Penn Plaza Tenant Council.

The first of the Mayor's pledges was to support the Gumbergs' application to have the entire site re-zoned so that a mixed commercial-residential development could replace the aged apartment complex. The application will go to the City Planning Commission for review; an eventual vote by the Commission on whether to recommend the re-zoning plan goes to City Council, which must then vote to support or reject the recommendations of the Planning Commission. As of press time, a hearing on the plan was scheduled to occur before the Commission on October 27.

Secondly, the City would have to support designation of the Penn Plaza site as a "Local Economic Revitalization Tax Act" district (LERTA). The website for the Urban Redevelopment Authority (URA) states that LERTA districts are intended to "improve the economic and business climate of certain residential and commercial districts by lessening the tax burden on new development". The LERTA designation can greatly reduce the property taxes paid by any new development to the three taxing bodies (city, county, school district) for a period of up to ten years.

Along with the previous two commitments, the Mayor would also have to agree to transfer ownership of a public park bounded on three sides by the Penn Plaza property to the URA. "Enright Parklet," as it is known, would then be sold to the Gumberg interests for a price no less than its appraised value, subject to approval by the URA Board.

The parklet was also created during the urban renewal era as a way to ensure that the public would have access to some dedicated open space when all of the dust (and dislocation of long-time residents) had settled from the demolition of older homes, the closing-off of streets, and the subsequent construction of the Penn Plaza Apartments. S. Saint Clair St., which once ran north all the way through to Penn Ave., now dead-ends at Enright Parklet.

The final commitment involves the City's impending search for a developer to take on the task of reusing a large tract of property containing the former Public Safety investigations building and an adjacent parking lot, both situated a quarter-mile north of the Penn Plaza site. Known historically as "Mellon's Orchard", the site has been home in recent years to the weekly East Liberty farmer's market. The Mayor noted that the Gumberg group would be invited to respond to what will eventually be a Request for Proposals issued by the URA to obtain a new, mixed-income residential development for the site. The City anticipates a development containing apartments with some units priced for rental by current or former residents of the Penn Plaza project. If the Gumberg interests do not win the rights to develop this second site, the Sept. 28 memorandum states that they would no longer be bound to build any apartment units at the Penn Plaza site that might be affordable to persons earning 80% or less of median household income



**ABOVE:** The sign for Penn Plaza Apartments at 5600 Penn Ave. might as well be one giant eviction notice to the property's East Liberty tenants. The City has negotiated a deal with Penn Plaza's owners to relocate all occupants from both buildings before re-zoning the site for commercial development. Photo by Rick Swartz.

for the Pittsburgh region. In 2014, a local family of four earning \$52,500 per year or less was judged to be at 80% of median family income.

When the news media reported on the execution of the Sept. 28 memorandum, representatives from East Liberty Development, Inc. (ELDI) and other nearby community groups, including the Bloomfield-Garfield Corporation, were able to obtain copies. ELDI, which has authored a master plan for the revitalization of the East Liberty community, was not included in the negotiations among the Mayor's Office, the Gumberg interests, and the tenant council. On Oct. 2, ELDI and other community stakeholders sat down with Kevin Acklin, the Mayor's chief of staff, to go over the details.

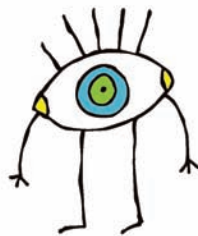
The Oct. 2 meeting enabled Acklin and Kamin, the attorney for the Gumberg interests, to speak to their thinking behind the memorandum, and their rationale for the deal that was made on Penn Plaza. Acklin stressed that a number of public approvals would be needed before all of the elements contained in the Sept.

28 memorandum could become law. In his view, this process would provide ample opportunity for public input on the re-zoning of the entire site and sale of the parklet.

Kamin said his clients were looking at a development that could approach \$100 million in cost, noting how the City's conveyance of the parklet to Gumberg is essential to realizing the full potential of any development plan. According to Kamin, no plan existed at the time of the Oct. 2 meeting.

Both Acklin and Kamin acknowledged that provisions could be added at a later date to allow for the creation of some open space on the site for the public to use, (although it would likely not be placed under City ownership). Kamin also disclosed that his client is hiring a Washington, DC-based architectural firm to prepare a site plan; the plan proposes once again extending S. Saint Clair St. back through to Penn Ave. in order to construct new multi-story, mixed-use developments on either side of the new street extension.

SallyAnn Kluz, Skip Schwab, and Kendall Pelling - all of whom attended the meeting



## LAWRENCEVILLE VISION CARE

Welcomes **Dr. Gerry Bell** and all his patients to our practice!



Dr. Gerry Bell has been in practice for 15 years in Bloomfield, and now we're joining forces to serve all our patients better. Dr. Bell has experience:

- Diagnosing and treating eye disease
- Fitting glasses and contact lenses
- Consulting for surgery, including lasik, glaucoma and cataracts.

We will treat all ages!

4122 Butler Street • Pittsburgh, PA 15201  
412-682-2339 • [www.lawrencevillevisioncare.com](http://www.lawrencevillevisioncare.com)



on behalf of ELDI - along with members of the Friendship Community Organization and several neighbors from S. Saint Clair St., expressed disappointment at the terms of the deal worked out by the Mayor.

Several of these speakers expressed the view that a number of community representatives, not just those living in the Penn Plaza complex, were purposely excluded from the discussions while a public park is being needlessly sacrificed in the interests of furthering a hypothetical development. Without a development plan on the table for the site, Schwab anticipated a public fight to preserve the park and block the extension of S. Saint Clair St. through to Penn Ave.

After their get-together with Acklin and Kamin, these representatives said that they would begin planning future meetings, both among themselves and with all residents of the area, to plan their next steps. Kamin did tell the group that time is of the essence for the property closest to Penn Circle West. For that part of the site, the Gumberg interests have lined up a prime commercial tenant whose lease, Kamin said, "would help to pay the bills for most of the work to be done there."

Hence, Kamin said Gumberg has informed the tenants living in that building that they will have only until February of 2016 to relocate. Kamin said future residential development on the rest of the site would have to be phased in, and, therefore, is not as urgent. From his perspective, there is no way "for the market to absorb several hundred more market-rate apartments with all of the other developments underway in the East End." This is, according to Kamin, why his client is comfortable with giving those tenants now living in the building closest to S. Negley Ave. (5600 Penn Ave.) until the winter of 2017 to move out of their homes.

In the Oct. 5 application Jonathan Kamin made to the Planning Commission on behalf of Pennley Park South, Inc. (PPSI) - the Gumberg-controlled entity that is the legal owner of the Penn Plaza site - there is an attachment entitled, "Authorization to File, Zone Change Petition". This document, which also bears the signature of Kevin Acklin, authorizes PPSI to include the Enright Parklet in its petition for the zoning change. ♦

## Garfield Jubilee embraces online education

By Kathleen Fennell *The Bulletin*

*Garfield* - On October 8, the Garfield Jubilee Association announced a partnership with Smart Horizons Career Online Education - an accredited private online school district - to offer Pittsburgh residents the opportunity to earn high school diplomas and entry-level career certificates through Cengage Learning's Career Online High School (COHS).

3Rivers Workforce Investment Board and a citywide collaboration between the City of Pittsburgh, Community College of Allegheny, and the University of Pittsburgh will work to help local residents connect with COHS to earn full accreditation.

This online education offers eighteen-credit, career-based, high school diploma programs designed to prepare students for entrance into the workplace. Career certificate offerings include childcare education, office management, protection services, Homeland Security, transporta-

tion services, professional skills, retail customer service, and food service skills.

Offered as part of GJA's YouthBuild program, COHS is specifically designed to re-engage older youths into the education system and prepare them for entry into post-secondary career education or the workforce. Classes are supported by certified instructors and coaches; students have "24/7" access to the online learning platform.

The YouthBuild program provides educational and academic enrichment programs, post-secondary education and resources, and workforce development programs to disadvantaged youth from eighteen to twenty-four years of age.

GJA expects to have approximately seventy students enrolled in the program and will be tracking the students' success as part of a citywide "collective impact" initiative. ♦

**Keep up with neighborhood events! Visit the Bloomfield-Garfield Corporation's news blog at**

<http://Bloomfield-Garfield.org>



**Follow the Bloomfield-Garfield Corporation on Twitter (@BloomGarCorp)**

**CUTITTA**  
**CHIROPRACTIC**  
 4733 Butler Street  
 Pittsburgh PA 15201  
 (412) 325-4100  
 Info@cutittachiro.com

**IN CHARGE OF  
 PLANNING  
 THE PERFECT  
 OFFICE PARTY?**

Now booking  
**FREE massage stations**  
 for 2015 holiday parties!  
 Our chairs fill up fast -  
 email us soon to reserve your  
free day of massage!

**Give your employees  
 the holiday gift  
 they really want**  
**Events.cutitta@gmail.com**

For Everyone in the Flock and  
 Every Room in the Nest, shop at

**ROBIN'S  
 Nest**

Unique  
 Personal & Home Goods  
 crafted by Local Artisans

free  
 gift  
 wrapping!

handmade:

- Home Decor • Wall Art
- Bath & Body • Hand Bags
- Jewelry • Accessories

412.362.2600  
 f /RobinsNestPittsburgh  
 www.RobinsNestPittsburgh.com

shop  
 online!

WINTER  
 HOURS: Tue - Sat 11AM - 6PM  
 Sun 12PM - 4PM

visit us near the intersection of Penn + Negley  
 5504 Penn Ave | Pittsburgh, PA 15206

Is your child  
**OVERWEIGHT**  
 and between the ages of 12 & 17?

**IF YES, THEY MAY BE ELIGIBLE** for a research study at Children's Hospital of Pittsburgh of UPMC that will examine health benefits of regular exercise

**STUDY INCLUDES**

- Exercise Training at No Cost
- Dietary Counseling
- Fitness Evaluation
- Physical Exams & Blood Testing
- Body Composition
- Overnight Stays
- Compensation Provided

**Children's** of **UPMC**  
 Hospital of Pittsburgh

**FOR MORE INFORMATION, PLEASE CALL 412-692-7567**



## Students' pilgrimage to Harrisburg demands budget resolution

By Jeanette Lahm *The Neighborhood Academy*

*Harrisburg* - Over one hundred days of budget impasse is impacting hundreds of non-profits and schools across Pennsylvania, including The Neighborhood Academy (TNA).

Pittsburgh's only college-preparatory school serving eighth through twelfth grade, low-income students, TNA receives a full third of its funding from Educational Improvement Tax Credit (EITC) dollars. Until the state budget is passed, this invaluable funding remains in limbo.

On October 13, school administrators decided to bring their students to Harrisburg for a hands-on civics lesson; embracing the right to free speech, students voiced their budget concerns to state legislators. Until the budget impasse

is resolved, TNA and many other non-profits will likely be facing some serious financial decisions in the near future. According to a recent survey released by the Greater Pittsburgh Nonprofit Partnership and the Forbes Fund, nearly sixty percent of the region's human service and community development agencies have already begun to experience cash flow issues; another twenty-six percent of the polled organizations believe they will be facing the same problems by the end of November.

Those interested in helping these students during the ongoing budget crisis can mail donations to: The Neighborhood Academy / Budget Crisis Gift / 709 N. Aiken Ave. / Pittsburgh, PA / 15206. ♦

## Art gallery elevates the local "blogosphere"

By Nina Sauer *Most Wanted Fine Art*

*Garfield* - Most Wanted Fine Art (MWFA) (5015 Penn Ave.) is celebrating "National Blogging Month" this November with "The Art of Blogging" on November 6, during the First Fridays Unblurred gallery crawl. This group exhibit, which plans to host several events throughout the month, explores blogging as a legitimate, modern art form.

Pittsburgh is home to more than four hundred blogs curated by people who want to share their love of the city and inspire each other's freedom of expression. The November exhibit will offer bloggers a chance to showcase their artistic side. Together, they can explore sources of inspiration, highlighting everything from painting to brass quintets.

Whether blogging is considered an art form, mere craft, or an unruly off-shoot of journalism, it is a labor of love and creativity that infuses our lives with new ideas and an unparalleled opportunity to engage (and even outrage) the community. MWFA is excited to team up with Pittsburgh Bloggers to acknowledge and honor the contributions of bloggers through Pittsburgh's blogosphere; the gallery will host an event called "Best of the Burghosphere," an awards ceremony honoring creative bloggers in the region.

On Friday, November 20, MWFA will kick off the "21+" awards event at 7 p.m. Our city's best and brightest bloggers will enjoy free refreshments as they celebrate their work with an esteemed pool of celebrity judges. A suggested \$5 donation (per person, at the door) will generate proceeds necessary to sustain MWFA's Resident Artists project. ♦

# They were missed then. They're missed now.



Now is the time we especially remember those who served for our country. They fought to make a better world for the rest of us, and we will never forget them.

## D'Alessandro Funeral Home & Crematory Ltd.

"Always a Higher Standard"

*Daniel T. D'Alessandro, Spvr.*

4522 Butler St. • Pittsburgh, PA 15201

Phone: 412-682-6500 • Fax: 412-682-6090

www.dalessandrofhd.com • dalessandrofh@aol.com

## WELCOMING NEW PATIENTS

Dr. James E. Blaugrund of Metropolitan Ear, Nose and Throat Associates is now accepting new patients at his office at UPMC St. Margaret.



### James E. Blaugrund, MD, FACS

Dr. Blaugrund received his medical degree from Yale University School of Medicine, graduating with honors. He completed his residency in otolaryngology at Johns Hopkins Hospital. Dr. Blaugrund completed a fellowship in Head and Neck Surgery and Laryngology at Johns Hopkins Hospital prior to joining the faculty of the University of Pennsylvania. Dr. Blaugrund joined Metropolitan Ear, Nose and Throat Associates in 2001. He specializes in general otolaryngology, head and neck surgery, thyroid/parathyroid surgery, and advanced laryngology.

To schedule an appointment, or for more information, call 724-772-2711.

UPMC St. Margaret  
200 Delafield Road  
Suite 3030  
Pittsburgh, PA 15215

## UPMC St. Margaret



# Nonprofit works to preserve landmark church in East Liberty

By Elizabeth Sensky *East Liberty Development, Inc.*

*East Liberty* - The St. Peter & Paul Roman Catholic Church (130 Larimer Ave.) has been the subject of much speculation ever since early 1990s, when it first began a decades-long decline. Prominently sitting on the edge of East Liberty, the church's deteriorating steeples are representative of both the neighborhood's promising future and the historical significance of its past.

Many people recognize it as the church featured in the cult classic movie, *Dogma*; others simply know it as "that abandoned church in East Liberty." What is now a site of blight and neglect was once an eminent landmark and center of congregation for the German Catholic community in the East End.

Constructed in 1890-91 by architect Adolphus Druiding, the church was partially rebuilt by architect John Theodore Comes in 1909, after a fire destroyed much of the building. When the parish dissolved in 1992 during a merger with five other Catholic parishes, the church was driven out to pasture. In 1997, the Everlasting Covenant Church gained ownership of the property with the intention of restoring the church and starting a charter school. When the charter for the school was not

renewed after five years, the church was abandoned once again.

After more than a decade's worth of starts and stops, St. Peter & Paul Church is about to embark on a new process of restoration. On July 22, East Liberty Development, Inc. (ELDI) was appointed conservator of the property by the Allegheny Court of Common Pleas, giving the organization control of the property to secure the building and safeguarding its future. ELDI is now in the beginning stages of a plan to stabilize the property and open it up to the community for possible end-uses.

What makes this church great is also what makes it a challenge, Kendall Pelling, Director of Land Recycling at ELDI, explains. "The St. Peter & Paul Church is a massive church building in very poor condition, so it's extremely challenging to find a new use for the building - especially one that really works."

After a feasibility study of the building was completed in 2013, estimates for restoration were upwards of five million dollars. "It's a beautiful building, so it's easy to imagine wonderful things that could happen in the space," Pelling said. "The problem is that the renovation of this

church building is going to be so expensive that it's going to be very hard to find a use that is financially sound."

But before end-uses can be considered, ELDI's first priority is to clear and secure the property. Pelling acknowledges that the first stage of "site clearing" is complete and that the church and school building are now secure.

The next step, he says, is removing asbestos hazards from the property. "We've been focusing our attention on making sure we can get the building secure and dry before winter," Pelling said. "Once we get that stabilization accomplished, we will be focused on thinking about the future."

ELDI recently hired a consultant to file the initial survey submission with the local historic preservation office. In order to ensure that preservation concerns are properly addressed, the Young Preservationists Association (YPA) and the Pittsburgh History & Landmarks Foundation are now on board with the proceedings.

According to YPA's executive director, Matthew Craig, "Preservation of a historic property such as this always revolves around the story that the building tells. If we were archeologists and found this building under a mound of dirt, the preservation support would be overwhelming because the building could say

**BELOW:** A historic landmark beyond its location at 130 Larimer Ave., the St. Peter & Paul Church is quite a subject of discussion in East Liberty; community groups and preservationists are working to find a fitting use for the historic building. Photo courtesy of [eyeheritage.org](http://eyeheritage.org).



so much about the people that used to live in the surrounding communities."

The Urban Redevelopment Authority is currently working to secure federal funding to finance a majority of the conservatorship work and guarantee the property's long-term viability.

Although end uses for the church remain to be seen at this stage, ELDI aims to keep the community conversant in its plans. Scheduled meetings regarding the future of the church will be promoted on ELDI's social media channels and on <http://eastliberty.org>. ♦

## PITTSBURGH EYE ASSOCIATES



Dr. Roxana Barad Dr. Chris Cecchini  
Ophthalmologist Optometrist

### EVERYTHING LOCAL FOR YOUR EYE CARE NEEDS!

- Medical eye care & dry eye therapy
- Diabetic eye exams
- Cataract evaluation & surgery
- Refractive implants for cataract surgery
- Glaucoma evaluation & treatment
- Cosmetic eyelid procedures
- Full service optical department & contact lenses

4424 Penn Avenue  
Suite 101, Pittsburgh, PA 15224  
[pittsburgheyeassociates.com](http://pittsburgheyeassociates.com)  
Across from Children's hospital

412-683-0500

LET US TAKE CARE OF YOU!

## Laurentian Hall Apartments

Apartment Living for Senior  
Citizens in an Elegant Setting



### Offering These Amenities:

- Equipped Kitchens
- Nightly Meals Catered by Ncva Café
- All Utilities Included
- FREE On-Site Laundry
- FREE Parking
- On the Busline
- Section 8 for Qualified Applicants
- 1st-Floor Lounge with Cable TV & WIFI

Immediate Openings for  
Efficiency Apartments!



For more  
information, call  
412-361-4462



## Capoeira Angola

Afro-Brazilian Martial Art Hidden in Dance



Adult Classes 7-9pm Fridays  
Kids Classes 5-6pm Mondays & Wednesdays

Steel Dragon

100 43rd St #113  
Lawrenceville  
412.362.6096

[www.steel-dragon.org](http://www.steel-dragon.org)  
[info@steel-dragon.org](mailto:info@steel-dragon.org)

Also: Ying Jow, Tong Bei,  
Xing-Yi, Tai Chi, Lion Dance

## Ugly Concrete?

Steps, Ret. Walls, Pads, Foundations,  
Driveways, Sidewalks, and more!

Concrete Repair &  
Restoration

Don't replace your ugly concrete!  
Repair! It will save you money!

412-734-5432

[johnshomeimprovement.org](http://johnshomeimprovement.org)

PA# 050547 Fully insured

Credit cards accepted



# Neighborhood FOCUS

## Morningside cozy: the Bookshelf Café

By Andrew McKeon *The Bulletin*

*Morningside* - Over a year before he opened the Bookshelf Café (1806 Chislett St.) last August, owner Jeremy Schillinger was just looking to buy a house in Morningside. Despite his youthful appearance, Schillinger never planned on a career as a Morningside baristo.

“When I saw the building for sale, it kind of just grew out of that,” he said. “I knew it used to be a coffee shop a few years back and wondered why it wasn’t anymore.” As it turns out, Schillinger and his partner were only a few degrees separated from the answer. They also run Thai Cottage (1109 S. Braddock Ave.) in Regent Square, where they stumbled upon the inside scoop after realizing that one of their employees was dating a former Morning Glory Coffee House employee.

Morning Glory was just beginning to find its niche in 2010 when, all of a sudden, the shop vanished into thin air and vacancy overtook 1806 Chislett St. “Apparently, the previous owner had bigger fish to fry and just decided to up and leave the place,” Schillinger said. Although he

“Morningside is such a nice, tight-knit neighborhood where people are really being good neighbors and watching out for each other’s kids, but there are still some funny quirks about it.”

– Jeremy Schillinger, owner, Bookshelf Café

understands the pressures of small business, Schillinger says he welcomes a more casual rhythm with his new venture. “Thai Cottage is a whole different monster, altogether,” Schillinger confessed. “Compared to the hustle and bustle of running an Asian restaurant, [Bookshelf Café] is definitely a relaxing place for me.” His new establishment maintains an astute, yet inviting exterior in the face of a small business district that is trying to return to better days. Inside, shelves of books are tucked above the tables like trundle beds; underneath a stack of board games, the radio receiver glows like a hearth.

Relying on just a skeleton crew of college students and a few other Thai Cottage servers, Schillinger covers all the coffee shop bases (good beans, baked goods, and service) and still manages to cook up some delectable comfort food. “The most popular thing lately has been the ‘breakfast meatloaf,’ which is a sausage meatloaf with a bunch of vegetables and a hardboiled egg in the middle. It’s got the whole ‘Scotch egg’ thing going on, but with a pork sausage flavor to match.”

Schillinger knows that, in order for a commercial destination to survive in an otherwise residential neighborhood, it must establish a local reputation. Much to the



**ABOVE:** Closing time on Sunday finds one last customer enjoying the ambiance of the Bookshelf Café (1806 Chislett St.) in Morningside. Since opening in August, the café already has a good local following in what is quickly becoming a destination neighborhood. Photo by Andrew McKeon.

owner’s delight, Morningside residents have already begun frequenting the café. Somewhere between Stanton Heights, Lawrenceville, Highland Park, and the zoo, this neighborhood takes pride in its quiet, congestion-free location; its numerous stop signs guarantee a neighborly pace of traffic. “Morningside is not a neighborhood you drive through every day,” Schillinger emphasized. “You have to seek it out a little bit and go through all the stop signs to get down here.”

Building on the success of the Bulldog Pub (1818 Morningside Ave.) and a new ice cream parlor, the neighborhood is becoming somewhat of a destination. “Morningside is such a nice, tight-knit neighborhood where people are really being good neighbors and watching out for each other’s kids, but there are still some funny quirks about it,” Schillinger said. “It’s busy on nights that you wouldn’t expect and vice versa.”

The café specializes in all the homespun amenities that many coffee shops have forsaken; it is designed to, in Schillinger’s words, “be a place where anyone can feel comfortable just hanging out and looking through the window on a rainy day.” Yet - between board game nights, a lecture series, and an ‘open-mic’ event for film and video artists - the Bookshelf Café sure has a lot of fun ways to while away the weather, rain or shine. Find the Bookshelf Café on Facebook for more information about upcoming activities and menu specials. ♦

Quantum Theatre  
celebrating 25 years of  
theater that moves you.

THE GERRI KAY  
NEW VOICES PROGRAM  
PRESENTS

**CHICKENS  
IN THE  
YARD**

BY  
HATCH ARTS COLLECTIVE

WRITER  
**PAUL KRUSE**

DIRECTOR  
**ADIL MANSOOR**

PRODUCER  
**NICOLE SHERO**

**JAVO STUDIOS**

5137 Holmes Street  
**LAWRENCEVILLE**

**NOVEMBER 20**  
THROUGH  
**DECEMBER 6**  
**2015**

TICKETS: \$30-\$40  
\$18 student tickets available for select performances.  
Call Quantum Theatre at 412.362.1713  
or visit [www.quantumtheatre.com](http://www.quantumtheatre.com)



## Wear After Shop from page 1

(4752 Liberty Ave.) in Bloomfield. Providing quality clothing and housewares to East Enders for the last ninety years, this resale store generates funds to support local communities. Thanks to this and other fundraising efforts over the last ten years, the JLP has donated nearly \$500,000 to support children's health, literacy, and development.

Donating more than just their time to the store, League members have also contributed countless clothes and household items to its inventory. The Wear After Shop first opened its doors on October 14, 1925, at 5427 Penn Ave. in Garfield. After two changes of location, the store finally found a permanent home on Liberty Ave.; it has been part of the fabric of Bloomfield ever since 1970.

For the past five years, the JLP's board of directors, along with various committees, created initiatives to increase the Wear After Shop's net profit. Eventually, the fate of the brick-and-mortar fundraiser was subject to a financial decision.

While the news might come as a loss to the store's loyal customers and neighbors, it also comes as an opportunity for the League to recalibrate its resources to make an even more meaningful impact. JLP has already begun working to secure food access for households living below the poverty line in the East End of Pittsburgh.

Without such a welcoming neighborhood and dedicated staff volunteers, the Wear



**ABOVE:** After ninety years of dedicated service to its East End customers, the Wear After Shop (4752 Liberty Ave.) in Bloomfield is closing its doors for good on Nov. 21. A year-round, brick-and-mortar fundraiser for the Junior League of Pittsburgh, the resale store is no longer profitable enough to support the JLP's community mission in the East End. Photo courtesy of Kimberly Ryan.

After Shop would never have experienced the kind of growth and support it did for so many years. The shop's long-standing partners - including the Women's Center & Shelter of Greater Pittsburgh, Carl W. Hermann Furs, and the Alliance of Nonprofit Stores - have been instrumental to its long tenure in Bloomfield.

While they begin wrapping up ninety years of charity, the staff invites everyone to shop some of their last sales. On its last day of business - Nov. 21 - the Wear After Shop will feature a "Sale-abration." For more information about final sales, visit the store's Facebook page (<http://facebook.com/Wear-After-Shop-680066922086823/>) or check out <http://jlpgh.org>. ♦

## Small Business Saturday

Small Business Saturday is a national initiative to promote small businesses and help them increase sales on the day after "Black Friday." This year, Small Business Saturday takes place on November 28, from 11 a.m. to 7 p.m. (hours vary depending on location). Participating businesses will hang balloons outside their storefronts.

To celebrate Small Business Saturday, the Bloomfield-Garfield Corporation will host a Holiday Market inside the Community Activity Center (113 N. Pacific Ave) from 11 a.m. until 4 p.m. - local crafters and vendors will have the opportunity to sell their goods in time for the holiday season. For more information on the Penn Ave. businesses participating in Small Business Saturday, or information on the Holiday Market (including how to become a vendor), please visit <http://pennavenue.org> or call Commercial District Manager, Amber Epps, at 412-441-6950 x16.

## ACA open enrollment begins Nov. 1

By Wesley Davis Bloomfield-Garfield Corporation

Garfield - November 1 marks the first day of a new open enrollment period for the Affordable Care Act health insurance marketplace. From November 2015 through February 2016, individuals will be able to enroll in health insurance plans through the Affordable Care Act marketplace. Those who have already searched the marketplace to enroll in a health insurance plan will now have the opportunity to change plans.

In partnership with the Bloomfield-Garfield Corporation (BGC), Enroll America is hosting an enrollment kickoff event from noon to 4 p.m. on Sunday, November 1, at the Eastside Neighborhood Employment Center (5321 Penn Ave.). Health insurance enrollment specialists from Consumer Health Coalition and the Young Women's Center of America will be on hand to help individuals research their health insurance options and enroll in a plan.

As Enroll America's Western PA regional director Sean Murphy noted, "What we offer is free in person assistance with a healthcare navigator. Studies show that those who receive this free assistance are twice as likely to enroll, and spend half the time enrolling, when compared to those who try enrolling without assistance."

According to Murphy, attendees who are eligible for Health Choices insurance plans (formerly known as Medicaid) can enroll in as little as twenty minutes. "If you chose not to enroll last year because plans were too expensive, there very well may be plans in the marketplace this year that are less expensive," Murphy explained.

Local residents like Brett Acie, Sr., who found himself a fitting plan during last year's open enrollment period, are eager to explore more of their options this year. While Acie was able to acquire medical and dental coverage last year, he indicated that he would like to attend the Nov. 1 enrollment event in hopes of obtaining vision coverage.

In order to properly enroll, those attending the event must bring proof of identity (a driver's license or ID card is sufficient) and a recent paystub, or benefits printout, to show proof of income. Anyone interested in meeting with a trained health insurance specialist can schedule an appointment by calling the BGC at 412-206-1298 or visiting <http://getcoveredamerica.org/connector> to schedule an appointment. ♦

Due to the success of The Big Easy, we are moving to a larger facility not only to facilitate our clients, but to expand our services, including daycare, boarding, a Café and grooming.

Voted "Best Veterinary Hospital In The City" for two consecutive years.  
-Tribune Review

### Safety Measures - Facility Design

**Safe Yards**  
Our outdoor play yards have a 6 feet fence with additional fencing to prevent escape.  
Our outdoor play yards also have artificial grass.

**Clean Air**  
Weather permitting, we have multiple garage doors that will be open to allow fresh air and clean breeze filter through for your dogs to enjoy while they are playing. This will maintain a clean and healthy facility free from bacteria and odor.

**Fire Protection**  
Our facility has a fire alarm and heat sensor that automatically dispatches the Fire Department in the event of smoke or heat detection. Staff is close by for emergencies.

**Veterinarians On-Site**  
Big Easy Dog Daze is the ONLY DAYCARE/BOARDING FACILITY IN PITTSBURGH THAT HAS VETERINARIANS ON-SITE should immediate care be needed.

**Baked Goods for Dogs by The Pet Bakery of Oakmont!**

### Services

- Wellness & Preventative Care
- Senior Pet Care / Specialty Diets
- Micro Chipping
- Urgent Care
- Surgery / Radiology
- Laboratory, On-Site
- Pharmacy, On-Site

**NEW LOCATION OPEN FOR BUSINESS!**

Big Easy's Doggy Daycare, Dog/Cat Boarding  
Please call us today for booking information

THE BIG EASY  
DOG DAZE  
&  
CAFE

**12 McCandless Avenue  
Upper Lawrenceville**  
412-908-9301  
[www.TBEAH.com](http://www.TBEAH.com)

**Office Hours:**  
Mon-Thur: 9am-7pm  
Fri: 9am-6pm  
Sat: 9am-12pm

Walk-In services end 30 minutes prior to close of business. After-Hour emergency services available.





**ABOVE:** During the Columbus Day Parade, participants fly flags from all over the Americas on Bloomfield's Liberty Ave. Although it means a lot of different things to a lot of different people, Columbus Day has come to represent a "smorgasborde" of American pride. Photo by John Colombo.

## New restaurant at historic Penn Ave. locale

By Kathleen Fennell *The Bulletin*

**Lawrenceville** - Last year, when Pat Maher, Matt Freed, and Eric Stasenکو purchased a property on Penn Ave. in the hopes of opening a new bar and grill, they had no idea what was in store. The site at 3523 Penn Ave., formerly Kopec's bar, required nearly a full year of renovation before the co-owners could successfully open Pints on Penn this past Labor Day weekend.

By revitalizing the existing stained glass windows, dark wood, and intricate tin ceilings, Maher and company unknowingly restored the space to its former glory; the property dates back to the 1880's, when it was first established as a neighborhood bar. After temporarily transforming into an ice cream parlor during the Prohibition Era, the space flourished as J. McGeown's Bar in the 1940s. When McGeown's grandchildren recently visited Pints on Penn, they were surprised by its strikingly familiar atmosphere.

Before closing on the property, the co-owners held a neighborhood meeting last July. Neighbors' positive feedback convinced them that a place like Pints on Penn could thrive in that location. Residents of St. Augustine's Plaza (230 36th St.), a senior-citizen high rise building nearby, remembered how the space had always been a good place to grab a bowl of soup and watch football.

"The goal is to be a neighborhood place where you can get a mix of people," Maher told *The Bulletin*. "Some of the places on Butler St. are overly focused on one area. We want to more of a universal neighborhood bar, but one that serves more than just your typical bar food."

As its name suggests, Pints on Penn purveys a selection of local and craft beers. Currently, the bar boasts twelve taps with plans to expand to twenty-four. Complementing the rustic bar downstairs, a sit-down dining room and outdoor overlook give definition to the upstairs ambiance.

"The name Pints on Penn evokes the idea of a pub, and I think we capture that really well in the bar area with the old bar. The dining room is separate so it's a little different atmosphere and I think we are still trying to figure that piece out a bit. But I think we capture the idea of a great place in the neighborhood," Maher said.

While some patrons will enjoy staple items like pierogi, barbecued ham, and a city chicken sandwich, others might savor the vegetarian options. Dishes like stuffed zucchini and stuffed avocado are already essential to a menu that also incorporates seasonal foods, like a gourd soup bowl. Pints on Penn also offers weekly bar and grill specials: "Yuengs and Wings" on Mondays, "Taco & Triva Tuesday," "Wine Down Wednesday," and "Bacon & Bourbon Tuesday."

Finding its place in Lawrenceville in just a matter of months, Pints on Penn has already begun attracting repeat customers from the neighborhood.

"It's been a lot of foot traffic. Within the first two to three weeks, we had regulars coming back many times over," Maher said. "We already have folks coming in and saying, 'I'm going to work my way through the menu, one by one.'" More information about Pints on Penn, and its weekly specials, is available at <http://pintsonpenn.com> and <http://www.facebook.com/pintsonpenn>. ♦

Health for the newly anointed in this sisterhood and for those who are more mature. Health for breasts and strong bones. And health for hearts and minds. Health is why West Penn Hospital was rated top 100 for Women's Health by Becker's Hospital Review. Health is why women are choosing our state-of-the-art birthing facility, our level 3 NICU and our outstanding services in midlife transitions. Health is why we're a leader in minimally invasive gynecologic surgery and have some of the region's most respected and innovative gynecologists to guide you through life's many changes. So whether you're childbearing or golden-yearing, this is the place to come for health. For an appointment, call 412.DOCTORS (362.8677) or visit [AHN.ORG](http://AHN.ORG)

# Health for All women.



Allegheny Health Network

Health for All™



West Penn  
Hospital



## Local green thumbs spruce up the Community Activity Center



**ABOVE:** After clearing away debris and leveling the ground outside the Community Activity Center (113 N. Pacific Ave.) in Garfield, a group of volunteers from Carnegie Mellon University posed beside their handiwork. Photo courtesy of Minette Vaccariello.



**ABOVE:** Garfield neighbors reflect on a job well done after planting shrubs and vegetables in front of the center on N. Pacific Ave. As long as they are beautifying the neighborhood, these local volunteers never mind getting their hands dirty. Photo courtesy of Minette Vaccariello

## Timebomb explodes onto the Penn Ave. scene

By Amber Epps Bloomfield-Garfield Corporation

**Garfield** – During its fourteen year residence on S. Highland St., urban lifestyle shop Timebomb became a neighborhood source for streetwear, skateboarding gear, and art supplies.

Recent construction projects and other rent-ratcheting developments in East Liberty have forced Timebomb to relocate to Garfield. Now located at 5450 Penn Ave., next to Daily Bread and Refresh PGH, the shop offers clothing designed by local street artists and other underground craftspeople.

The owner, known as “Brick,” believes that his store represents the original pillars of hip hop; he considers skateboarding to provide the additional “transportation

element” of urban lifestyle. Eager to settle in to the new headquarters, Brick has planned a series of in-store events and deejay sets inviting his Penn Ave. neighbors to celebrate Timebomb’s new chapter.

“It feels more like a real Pittsburgh community up here [in Garfield],” Brick proclaimed. “It’s a way cooler street in a way cooler neighborhood compared to where we were before.”

The store’s Current hours of operation are noon to 6 p.m., Monday through Saturday, and “by appointment only” on Sunday; Brick plans to expand the hours next year. More information is available on Timebomb’s [web site:](http://timebombshop.com/) <http://timebombshop.com/>. ♦

## CARL Program Home Loans

Thinking about buying a “fixer-upper” in the Garfield area? If so, you may qualify for the Community Acquisition & Rehabilitation Loan (CARL) program.

The CARL program combines a mortgage loan and a rehabilitation loan, which allows you to buy and rehabili-

itate a home with one affordable financing product! For more information or a list of participating lenders, contact Samuel Su at [ssu@pcrg.org](mailto:ssu@pcrg.org) or call 412-391-6732 (ext. 210).



**“Like” the Bloomfield-Garfield Corporation**

on Facebook for the latest neighborhood information and community photos.

*Insuring our community for 75 years*



**AUTOMOBILE - HOME - BUSINESS**

CALL TODAY FOR A QUOTE: 412-681-2700

5020 Centre Ave. Pittsburgh, PA 15213

Pittsburgh • Penn Township

[www.wagneragency.com](http://www.wagneragency.com)





# Holiday lights on hold in Bloomfield

By Christina Howell Bloomfield Development Corporation

*Bloomfield* - Every year, the Bloomfield Development Corporation (BDC) works diligently to hang holiday lights along Liberty Ave. in Bloomfield. Bringing the neighborhood together to engender a sense of community, these decorations represent an important part of Bloomfield's unique identity, not to mention its penchant for holiday festivity.

After delighting neighbors for more than a decade, the lights have unfortunately become worse for wear and their deteriorated condition now creates possible safety hazards. The cost of purchasing new lights exceeds the BDC's budgetary allocations, so the organization has decided not to hang holiday lights this year. The decision was not rendered lightly but, rather out of necessity; in order to properly hang Bloomfield's lights for years to come, the BDC will raise funds this year to purchase new fixtures and cover next year's installation and storage costs.

The BDC will host its inaugural "Holiday Light Fundraiser" on Monday, December 7, from 5 to 7 p.m. at Station restaurant (4744 Liberty Ave.) in Bloomfield. Tickets, which are available for \$25 apiece, can be purchased online at <http://bloomfiednow.org> or by calling the BDC office at 412-681-8800. ♦



## Give Thanks

**On Thanksgiving** we are supposed to give thanks.

**But what** does that mean?

**It means being thankful** for what you have and not dwelling on what you don't have.

**May you and your family be blessed** with many reasons to be thankful for.

**HAPPY THANKSGIVING!**



WALTER J

**ZALEWSKI**

FUNERAL HOMES INC

*"Exceeding Your Expectations"*

LAWRENCEVILLE POLISH HILL

Walter J Zalewski, Supervisor	Joseph M Lapinski, Supervisor
216 Forty-fourth Street	3201 Dobson Street
Pittsburgh, PA 15201-2893	Pittsburgh, PA 15219-3735
412 682-3445	412 682-1562



**ABOVE:** On Thursday, October 15, the Bloomfield-Garfield Corporation hosted a reception for two new community leaders: Christopher Horne (seated, at right), Principal of Pittsburgh University Prep High School (U-Prep), and Ron Andro, President and CEO of West Penn Hospital (WPH). They spoke with local residents and answered questions about the future of their respective institutions; Andro credited WPH's local employment programs for revitalizing the hospital while Horne explained how "the U-Prep Way" mantra helps create a positive educational culture. Photo by Andrew McKeon.

# Arsenal Pre K-5 builds community of learners

By Dave Breingan Lawrenceville United

*Lawrenceville* - This year, Pittsburgh Arsenal PreK-5 (215 39th St.) has a new theme: "building a community of learners." It's a fitting theme for the elementary school that has a wide array of partners and programs inside and outside the school day.

Kindergarten and first grade teachers are spearheading the Children's Innovation Project, a program that teaches children to develop critical thinking skills by exploring technology and investigating its material components.

To understand where their wooden toys come from, for instance, students in Mrs. Chernay's and Mrs. Williams' kindergarten classrooms are currently working with wood blocks and pieces of a tree trunk, noticing the effects of sandpaper and the processes that transform raw material into final products. As the school year progresses, classes will endeavor into more complex territory as they delve into electronics.

The entire school staff, from teachers to the custodial and cafeteria workers, are partnering with the International Institute for Restorative Practices. As part of the effort, classrooms are regularly using "circles" to proactively build relationships and create a strong school community; students are already responding with positive results. "I like circle time because we learn about what's happening in each other's lives," fifth grader Sadiki Salim remarked.

"Friday clubs" are also returning for the second year at Arsenal. For one Friday of every month, the entire school breaks into various enrichment activities chosen by students. Featuring yoga, chess, robotics, cooking, and musical theater - Friday clubs involve parents, as well as local community groups and businesses, in the activities.

Arsenal parents volunteer up to nine

hours per week inside the school. Many also partake in learning opportunities for adults by hosting free monthly parent workshops that are open to the community.

Even after the school day is over, learning and enrichment opportunities abound. The gym teacher runs various intramural sports throughout the year, complemented by a Citiparks tennis program and a Cameroon Football Development soccer program.

Inspired by the Healthy Schools Initiative, a partnership with Children's Hospital of Pittsburgh, Arsenal features "Girls on the Run," as well as a mentoring program called, "Strong Women Strong Girls." The Bloomfield-Garfield Corporation and Neighborhood Learning Alliance are also coordinating a comprehensive afterschool program to provide students with academic assistance.

Since Arsenal students need a variety of support to facilitate their enrichment opportunities, many community groups have been eager to lend a hand. Located just three blocks away, Our Lady of the Angels Parish (225 37th St.) rallies to provide students with winter clothes and holiday toys; Family Guidance uses lunchtime to pair children with mentors.

With so many activities for a relatively small school of about three hundred students, it can be a challenge to keep all the balls in the air. Arsenal staffers tout their teamwork and dedication as the main elements needed to grow a community of learners.

"At Arsenal, there's an environment of high expectations, along with care," second grade teacher Robyn Queen said. "We have a really supportive staff and we're always pushing each other to do better, so that we can better challenge our students and help them grow." ♦



## Lawrenceville welcomes *Chickens in the Yard*

By Stevie Sheridan *Quantum Theatre*

Lawrenceville - *Chickens in the Yard* represents the inaugural production of the Gerri Kay New Voices Program, through which Quantum Theatre supports and mentors developing artists. Quantum has welcomed the Hatch Arts Collective – director Adil Mansoor, writer Paul Kruse, and producer Nicole Shero – into the laboratory to create this innovative play from scratch.

The collective's new play tells the story of a family through the eyes of their four chickens. Set in Pittsburgh, it explores what a gay identity means for one couple as they journey from the families that

raised them to the family they choose to create. Inviting everyone to join in taking one messy step forward, *Chickens in the Yard* offers a Rubik's Cube of lonely individuals and fragile couples; their subtle dynamics soon gel into surprising strength as they galvanize into an unconventional family.

In preparation for this exciting production, Lawrenceville's Javo Studios (5137 Holmes St.) has been transformed into a chicken coop full of warmth and wisdom. For more information and ticket prices, call 412-362-1713 or visit <http://quantumtheatre.com/chickens-in-the-yard/>. ♦

### Properties on Penn Ave.

Interested in buying/renting a property located on or around Penn Ave? Interested in selling/renting your own property located on or around Penn Ave? The Penn Avenue web site has a page dedicated to commercial and residential listings ([www.pennavenue.org](http://www.pennavenue.org)).

The properties listed represent those that we know to be available. If you would like your property listed on our site, please email details about the property, sale/rent price, approximate square footage, contact info, and photos (if available) to [Mainstreets@Bloomfield-Garfield.org](mailto:Mainstreets@Bloomfield-Garfield.org). Please use "Property Listing" as the subject line. Note: The BGC is not a real estate agent and does not arrange or broker the sale/lease of any properties. Instead, the BGC seeks to facilitate a way for potential developers or investors to locate owners who may or may not be interested in selling or leasing their property.

**In less than a year, you can earn a diploma in administrative office skills or health care office skills.**

### Goodwill Employment Training Center

- Small class size
- Job placement assistance after graduation
- 160-hour hands-on externship
- Free parking / on bus lines

**Get started today: 412-632-1706**  
**[www.getcpittsburgh.org](http://www.getcpittsburgh.org)**

Goodwill Employment Training Center  
118 52nd Street, Pittsburgh, PA 15212



## Local artist provides students with transformative experiences

By Shannon Hussey *Arts Out Loud*

*East End* - As local students navigate the challenges of the school year, one Lawrenceville artist aims to enhance young perspectives by immersing them in artistic experience. Visual artist and educator Derek Reese has created "Arts Out Loud," a program that gives young people opportunities to engage with local artists, where they explore how art forms can shape communities.

A native of Morgantown, West Virginia, Reese centers his art on the social environment, studying how people and places influence each other over time. Since moving to Pittsburgh, Reese has "become very interested in the cultural landscape," both the positive and negative aspects of which he would like to highlight and examine with the local students.

Programming for this year may have yet to begin, but Reese's model has already succeeded in providing vital experiences. Arts Out Loud served as an activity provider for Pittsburgh Public Schools' "Summer Dreamers Academy," which enabled Reese and other artists - including writer Sarah Shotland and improviser Annie Harder - to engage with dozens of at-risk students over the summer.

"The camp culminated in a multimedia performance," Reese recalled. "Our campers were able to perform for the entire camp and their parents. The show included dance, acting, writing, directing, and visual art." Empowered by this success, Reese is eager to connect with students and artists throughout the school year.

As an educator for the Mattress Factory Museum of Contemporary Art, Reese has previous experience working to connect young people with their communities. This experience, along with connections made as a teaching artist and program coordinator at MGR Youth Empowerment, has allowed him to bring together valuable talent and support for Arts Out Loud.

Reese duly acknowledges the legacy of youth-centered, social justice programs that inform his work, crediting former co-workers for their inspiration. "I couldn't have done this without the help of Phil Koch and Becky Flaherty, both former leaders within MGR," he said. "I am driven to continue the amazing work that Phil Koch started more than ten years ago with the 'Arts in Action' program."

Reese envisions a program that not only benefits the under-resourced youth it serves, but also enhances the skill sets and community involvement of the artists who share their time and talents with local students. "Artists play an integral role in rebuilding communities," Reese noted. "Arts Out Loud believes that artists are very well-suited to connect with youth living in under-resourced neighborhoods and guide them via transformative experiences." ♦



**ABOVE:** Derek Reese leads a classroom discussion at Pittsburgh Summer Dreamers Academy's South Hills Middle School location. He believes that proper art education requires more collective immersion than technical instruction. Photo by Shannon Hussey.



the  
**Bulletin** **BOARD**

**Sorry, but we do not accept listings by phone.**

The Bulletin Board publishes listings of volunteer opportunities, free or low-cost events and classes, fundraisers, and services that are of particular interest to our neighborhoods. Listings are published on a space-available basis; we cannot guarantee any placement. Announcements for the **December** issue of *The Bulletin* are due by **Nov. 16**. Please submit listings using our online form at [http://bit.ly/bulletin\\_submit](http://bit.ly/bulletin_submit).

**November 1 - Sunday**

**GARFIELD**

**Health Insurance Enrollment**

5321 Penn Ave. from 12 to 4 p.m. Attend this event for free help enrolling in an affordable health insurance plan. Call 412-206-1298 to schedule a free health insurance enrollment appointment.

**Nov. 6 - Unblurred First Friday**

**EAST LIBERTY**

**Snapshots of Poverty**

6022 Broad St. from 3 to 6 p.m. Inspired by *Witnesses to Hunger*, this is a project that empowers those who know firsthand what it means to face poverty – people who are too often left out of the policymaking processes that directly impact their lives. Using digital photography, the participants spark dialogue, engage and inform policymakers, and inspire change. It is free and open to the public. There will be food and wine. For more information: MariaM@justharvest.org or (412) 431-8960 x114.

**GARFIELD**

**Natural Renderings: Paintings by Irma Freeman**

Irma Freeman Center, 5006 Penn Avenue from 7 to 10 p.m. This special exhibition is wonderfully reflective, and even meditative, as Irma Freeman takes the observer into an almost spiritual journey within and beyond her compositions of the natural world. Also *The Girl Who Swallowed the Sun* is an interactive solo puppet show by Felicia Cooper.

**DOWNTOWN**

**OASIS Tutor Training**

Chamber of Commerce Building, 411 Seventh Ave., from 10:30 a.m. to 3:30 p.m. Become an OASIS tutor and help a child learn to read. No experience is necessary. Free training will be given to adults 50+. All materials and supplies are provided by OASIS. Tutors work with kids in grades k-4 in the Pittsburgh Public School District. For more information contact John Spehar at 412-393-7648.

**November 7 - Saturday**

**LAWRENCEVILLE**

**Lawrenceville Artists' Studio Tour**

Please join us in Lawrenceville for a wonderful day of art and creative engagement. Furniture designers, fiber artists, painters, sculptors, photographers, glass artists, printmakers, and more, will open their doors to the public to teach and converse about their disciplines. With 19 studios involved, housing a total of 49 artists, this is the largest artist tour to date. Watch artist demonstrations, view works-in-progress, purchase local artwork, and experience the environments that energize Lawrenceville's expanding creative culture. Bring your friends and family and enjoy a day strolling through the neighborhood as you explore the distinctive character of Lower, Central and Upper Lawrenceville.

**OAKLAND**

**Pittsburgh Blight Boot Camp**

Wyndham Pittsburgh University Center, 100 Lytton Avenue from 8 a.m. to 3:30 p.m. The Pittsburgh Blight Working Group made up of the City of Pittsburgh, Neighborhood Allies, GTECH Strategies, PCRG and Design Center presents Pittsburgh Blight Bootcamp, an event to learn about resources and best practices to increase the impact of community led blight elimination efforts.

**Holiday Vendor Showcase**

Winchester Thurston Upper School, 445 Morewood Ave from 3 to 7 p.m. Come out and start on your holiday shopping, grab free samples and enter to win FREE GIVEAWAYS! Food, jewelry, books, clothing, greeting cards and more! Tickets \$5 via Paypal using email bwhite@breliciousbites.com or call (412) 537-0384 for more information.

**November 10 - Tuesday**

**LAWRENCEVILLE**

**Senior Healthcare Workshop**

Stephen Foster Center, 286 Main Street from 10:30 a.m. to 12:30 p.m. Lawrenceville United's Senior AdvantAGE program is hosting a Healthcare Workshop including "Medicare 101" by UPMC, flu

**Local Events** **Classes**  
**Announcements** **Fundraisers**

shots bu Rite Aid, blood pressure screenings by St. Margaret's, and information from the library on how to use technology to research healthcare options. Lunch will be provided for free by the Stephen Foster Center for those who RSVP to Helen at 412-802-7220.

**November 11 - Wednesday**

**GARFIELD**

**Free Top Secret Learning Party**

5125 Penn Avenue, 4 to 6 p.m. Ever wondered about the science behind forensics? Or wished you could crack a code, solve a mystery, create an awesome disguise, or send a secret message? Explore all of these TOP SECRET things and more at Assemble's TOP SECRET Learning Party on November 11th! This event is free and fun for all ages! Participate in hands-on activities led by local makers, scientists, artists, and technologists. All materials provided.

**November 12 - Thursday**

**LAWRENCEVILLE**

**Lawrenceville United Membership Event**

Paint Monkey, 4020 Butler Street from 6:30 to 8 p.m. Lawrenceville residents are invited to LU's bi-annual membership event. At our last meeting, we heard from you about your priorities for the neighborhood. LU Board and Staff will be presenting how we are addressing these priorities. Members will also have an opportunity to vote on a proposed change to our bylaws.

**Free Microsoft Word Class**

Goodwill's Computer Lab, 118 52nd St. from 6 to 8 p.m. The Carnegie Library of Pittsburgh – Lawrenceville and Goodwill of Southwestern Pennsylvania have teamed up to offer free computer classes to residents who want to brush up on their computer skills. The class topic on

November 12 is Microsoft Word. Students will be introduced to Excel spreadsheets, entering formulas, and basic formatting. Participants must register in advance by calling 412-632-1842.

**November 13 - Friday**

**BLOOMFIELD**

**Fall Craft Fair**

West Penn Hospital, 4800 Friendship Ave. in the Windergarden and Burstin rooms from 7 a.m. to 4 p.m. Come check out an array of gift items for your shopping pleasure and a basket raffle. Tickets are \$1 each or 7 for \$5. For more information, call April at 412.578.5482

**EAST LIBERTY**

**Kelly Strayhorn Theater Presents Bill Shannon's "Stay Up"**

7 p.m. Pre-Show mixer and 8 p.m. show at Kelly Strayhorn Theater's Alloy Studios 5530 Penn Avenue. Artist Bill Shannon works with adults with physical disabilities to create live art while exploring themes of help and helplessness. This dynamic show will feature work from Shannon's "Stay Up" along with parts of earlier creations. Pay what makes you happy. Also running Nov. 14.

**November 14 - Saturday**

**GARFIELD**

**Improv Comedy Show**

ModernFormations Gallery and Performance Space, 4919 Penn Avenue at 8 p.m. The Amish Monkeys improv troupe will perform a full-length show, lasting between 80 and 120 minutes. Admission is \$9, cash or credit only. Seating is limited. For reservations, call the Gemini Theater at 412-243-6464. Content is generally PG-13. Check out <http://amishmonkeys.com> for more information.

**Annual Benefit Prayer Breakfast**

**BELOW:** Bloomfield neighbors partake in an alleyway yoga session on Oct. 10 as part of their neighborhood's Stoop City celebrations; the event was aimed to re-contextualize our everyday environment in more humane, meditative terms. Photo by John Colombo.





# Volunteer Opportunities & Services

Morningside Church of God In Christ, 5173 Dearborn St. from 9 a.m. to 12 p.m. The Central District of the First Jurisdiction Western PA will hold its Annual Benefit Prayer Breakfast. Donations only: \$5.00. For more information, please call 412-361-9865 or 724-444-6829.

**November 15 - Sunday**

## LAWRENCEVILLE

### Lunch and Movie

Zion Ev. Lutheran Church, 237 37th St. at 11 a.m. Zion Ev. Lutheran Church will host its fall lunch and movie. The movie is "Flywheel." A dishonest used car salesman decides to become the salesman that God wants him to be - with surprising results. Lunch will be Texas Chili. No charge and free will offering proceeds will benefit Lawrenceville summer lunch programs.

**November 18 - Wednesday**

## STANTON HEIGHTS Community Meeting

Sunnyside Elementary Library, 4801 Stanton Ave at 6:30 p.m. This is the last Stanton Heights Neighborhood Association community meeting of the year. The agenda will include elections for new board members as well as an update on our many community projects. All residents are invited to join us.

**November 20 - Friday**

## LAWRENCEVILLE

### Quantum Theatre Production

218 N Highland Ave at 8 p.m. 'Chickens in the Yard' is the inaugural production of The Gerri Kay New Voices Program, through which Quantum supports and mentors developing artists. The show will run from November 20 to December 6. 'Chickens in the Yard' offers a Rubik's Cube of lonely individuals and fragile couples, whose subtle dynamics gel into surprising strength as an unconventional family. There's wisdom and warmth in

the coop they've built in beautiful Javo Studios in Lawrenceville, with designers Britton Mauk, Patrick Hayes, Jenn Gooch, and David Bielewicz. More information can be found at [www.quantumtheatre.com](http://www.quantumtheatre.com) or by calling 412-362-1713.

## EAST LIBERTY

### Kelly Strayhorn Theater Presents Ursula Rucker's "My Father's Daughter"

7 p.m. Pre-Show mixer and 8 p.m. show at Kelly Strayhorn Theater 5941 Penn Avenue. Ursula Rucker performs a live memoir depicting her and her mother's intertwined lives accompanied by projected video imagery and live guitarist Tom Moetz. Pay what makes you happy. Also running Nov. 21.

**November 21 - Saturday**

## GARFIELD

### Free Thanksgiving Dinner & Winter Gear Giveaway

Morningside Church of God In Christ, 5173 Dearborn St. at 10 a.m. The goal is to feed 500 people. Morningside Church of God in Christ seeks donations of shoes, gloves, blankets, coats, hoodies, and scarves for all ages. They seek to aid the homeless and those less fortunate with any items of clothing that provide warmth. All are welcome to come enjoy delicious foods and a festive event. For more information call Cathy Bryant at 412-853-2022 or email [reggie705@yahoo.com](mailto:reggie705@yahoo.com).

**November 28 - Saturday**

## EAST LIBERTY

### Kelly Strayhorn Theater Presents the 8th Annual Suite Life

7 p.m. Pre-Show mixer and 8 p.m. show at Kelly Strayhorn Theater 5941 Penn Avenue. A celebration of the KST namesake Billy Strayhorn will

mark the 100th anniversary of his birth. Award-winning trumpeter Sean Jones will perform Strayhorn's compositions and work that reflects his influence with the Pittsburgh Jazz Orchestra. Enjoy a night of music topped off with birthday cake. Pay what makes you happy.

## Ongoing

## EAST LIBERTY

### Kelly Strayhorn Theater's Alloy Schools

Kelly Strayhorn Theater 5941 Penn Ave. Professional dancers and master teachers guide learning at KST's Alloy school for children of all ages on Saturdays September 19 through December 19. Toddlers to tweens can enjoy classes in a wide range of subjects including dance, acting, and yoga in a creative, non-competitive community setting. Drop in a class for \$5, take in six weeks of learning for \$30 or enjoy the program for twelve weeks for \$60.

## GARFIELD

### Systematic Bible Study

Morningside Church of God In Christ, 5173 Dearborn St. The Willa M. Johnson School of Bible and Ministry invites you to enroll in its ongoing systematic bible study. The classes offered are the Old and New Testament Survey, Revelation, Isaiah, Introduction to Computers, and Public Speaking. Please call Morningside Church of God in Christ for more information.

## LAWRENCEVILLE

### "Addicted to Trash"

Gallery on 43rd Street, 187 43rd St. The next exhibit at Gallery on 43rd Street is Addicted to Trash, assemblage and metal collage by Robert Villamagna. Villamagna is passionate about working with found materials, AKA his "trash". The show runs Nov. 6 to Dec. 31, 2015 with the opening reception on Nov. 6 from 7 to 10 p.m. Gallery hours are Tues. through Sat., 11 a.m. to 6 p.m. Visit <http://galleryon43rdstreet.com>.

## IMAGINE YOUR CLASSIFIED HERE!

The Bulletin helps local advertisers reach local customers. For more information about advertising in The Bulletin, please call 412-441-6950 (ext. 13) or email [Bulletin@Bloomfield-Garfield.org](mailto:Bulletin@Bloomfield-Garfield.org)

# Classifieds

## Services

### PRO TEC PEST & TERMITE SERVICE

"Quality Service at an Affordable Price"

*John Cygnarowicz*  
**412-628-6893**

### LOCAL CONTRACT DRIVERS NEEDED

Jumpstart/fuel deliveries/tire changes.  
Vehicle required, no experience necessary

**Call 267-270-5225**

### Your Friendly Driver

Reasonable rates. I wait while you shop; for doctor's appointments, other errands. Cleaning service also available.

**Call John at 412-969-7497**

### A Hauling Job?

We clear basements, yards, garages, attics, estates

***Fast, Reliable, Reasonable***

Also demolition work, minor repairs, grass cutting, salvage credit.

**412-687-6928 Call Walt 412-773-0599**

### MYWEBDOGGY.COM An Honest American Company

We Build Custom-Designed Websites  
Best Price and Quality

Email us at [info@mywebdoggy.com](mailto:info@mywebdoggy.com)  
or call Ruth at 412-687-7379

**December Bulletin Deadline: November 10**

Download advertising information: [bit.ly/bulletin\\_ad](http://bit.ly/bulletin_ad)

Download guidelines for stories, photos, and notices: [bit.ly/bulletin\\_news](http://bit.ly/bulletin_news)



*You're invited*  
**Santa's Night Out**  
Saturday 11/28  
6 - 9 p.m.  
*Slip Red Velvet punch and nibble snacks while you shop.*

*Toys for Magical Children*  
No batteries.  
No Screens.  
Pure Fun.

**LAWRENCEVILLE**  
4747 Hatfield St. at 48th  
412.478.7099  
Tues. - Fri. 11 - 7; Sat. 10 - 6; Sun. 1 - 5

**SAUER BROTHERS**  
Heating • Cooling • Boilers  
**412-782-1100**

**We've been installing Residential Furnaces & Air Conditioners For Over 60 Years**



# Seniors take advantage in Lawrenceville

By Nancy Leff *Committee Member, Senior AdvantAGE*

Lawrenceville - Parties, discounts, workshops, and new friendships are just a few of the reasons to join Senior AdvantAGE program. Seniors participating in the program - which is sponsored by Lawrenceville United (LU) - can now take advantage of ways to get out, become more active, and meet more people.

As program manager Helen Ewing explains, "Senior AdvantAGE is so important because people want to be known and respected in their community, especially in a rapidly changing neighborhood like Lawrenceville." During a "Beat the Holiday Blues" party last year, neighbors of all ages got know each other by singing holiday songs, watching volunteers' musical performances, and enjoying delicious food donated by local eateries. Senior AdvantAGE hosts regular workshops on health insurance and, from time to time, even throws block parties. At Spirit Lodge (242 51st St.), a hip new establishment in Lawrenceville, program members brought their tech devices to a pizza party where they were paired with young resident volunteers for "tech tutorials."

Among the perks that members receive from over forty participating Lawrenceville shops and restaurants is a 25% discount off Monday evening meals at Hambone's (4207 Butler St.), where many members sing to their hearts' content. Businesses choose the discount they want to offer; all seniors have to do is show their SeniorAdvantAGE card.

"It's about providing connections - to businesses, to information, to services, and to neighbors of all ages," Ewing said. "Our purpose is to empower our residents aged fifty-five and older to fully participate in the Lawrenceville community. When they thrive, the entire community will benefit."

The program also gives grants to its members as a means of supporting neighborhood activities. These grants have funded neighborhood plantings, annual block parties, and senior luncheons, among other local efforts. Getting involved is fairly easy; any Lawrenceville resident who is at least fifty-five years of age may contact the LU office (412-802-7220) for more information and an application. ♦

**BELOW:** Visitors to the Friendship House & Architecture Tour on Sunday, Sept. 27 are welcomed to the neighborhood with tour maps and warm regards. Photo by Diana Ames.



## Friendship House & Architecture Tour



**AT LEFT:** A chicken coop hides just above the fence line in Friendship, where tour-goers relished a chance to see all the unique features the neighborhood's domiciles have to offer. Now that the City of Pittsburgh has passed an ordinance to allow urban chicken-farming, coops are popping up in the most unexpected places. Photo by Diana Ames.

# Affordable Home Improvements

with a **WesBanco Freedom Modernization Loan**

Whether your home improvement plans include a general 'sprucing up' or replacement of doors or windows, consider WesBanco for the financing!

*WesBanco's Freedom Modernization Loan features:*

- \* Fixed Annual Percentage Rate - up to 10 years\* (call for current rates)
- \* \$1,500 minimum loan amount / \$10,000 maximum loan amount\*\*
- \* Unsecured loan - no mortgage on your home
- \* Streamlined approval process - so you can get started quickly!
- \* Available at ALL WesBanco Banking Centers
- \* Applicant and Area Income Limits apply

*Ask your WesBanco Bank lender for full details.*

  
**WesBanco**

[www.wesbanco.com](http://www.wesbanco.com)

**Janette Schafer** (NMLS 508994)  
Bloomfield Banking Center • 4719 Liberty Avenue • 412.902.3059  
**Jennifer Hribar** (NMLS 647865)  
Shadyside Banking Center • 5000 Centre Avenue • 412.909.7038

\*The Annual Percentage Rate (APR) for a 60 month CRA Freedom Modernization home improvement loan may range from 6.39% APR to 7.89% APR and is based on credit history, loan term, and minimum & maximum loan amounts. The monthly payment for a \$7500.00 loan for 60 months at 6.39% APR is \$146.39; the monthly payment amount for a \$7500.00 loan for 60 months at 7.89% APR is \$151.71. \*\*The minimum loan amount available for the program is \$1500.00; the maximum loan amount available is \$10000.00 and is based on credit history. The APRs and payment examples are based on interest rates presently in effect and include a .10% discount for automatic deduction of the payment from a WesBanco checking account. Other rates and terms are available upon request. Product only available within the Bank's Assessment Areas. Offers of credit subject to credit approval. Property must be owner-occupied. Mobile homes are eligible if they are permanently affixed to the real property owned by the titleholder to the mobile home. Other terms and conditions apply. Offer subject to change without notice. WesBanco Bank Inc. is a Member FDIC.

